

# Almendro

*Community*



Las Colinas Golf & Country Club



## Services & leisure

Your life in the Almedro Community includes some golf just a walk away, shopping in any of the convenient shopping centers, sunbathing on the beach or dining in any of the nearby charming villages. And all these services and leisure a short drive away:

- International schools
- Shopping centers
- Golf courses
- Marinas
- Natural reserves
- International Hospital
- Beach Club



## Las Colinas *Golf & Country Club*

Las Colinas Golf & Country Club is an exclusive residential complex with low housing density and built around an **award winning** 18-hole golf course. In a privileged location, Las Colinas sits on a valley surrounded by hills and a Nature reserve of protected land and woodland.

Las Colinas Golf & Country Club stands out for its privacy, natural beauty, exceptional climate, **extremely good connections** by road, train and air and conservation of the natural surroundings. Its homes, amenities, infrastructures and the golf course itself all blend perfectly into the landscape.



Las Colinas was named Europe's Leading Villa Resort in 2017, Spain's Leading Villa Resort in 2016 and 2017 and Spain's Best Golf Course in 2016 and 2017.

The complex offers a wide range of services to its residents:

 Sports areas

 Bars

 Restaurants

 Gym

 Mini market

 Beach Club

 Club on the Seafront

 18-hole golf course

 Golf academy

 School of falconry

 Nature trail

# Las colinas Masterplan

- |                        |   |
|------------------------|---|
| Avenida de Las Colinas | <b>1</b> Clubhouse<br>UNIK CAFÉ<br>enso shushi bar<br>Golf shop<br>Golf academy<br>Sport area<br>Kid's zone |
|                        | <b>2</b> Mini Market  |
|                        | <b>3</b> Acacia Community   |
| C/ Pedrera             | <b>4</b> Olivo Community<br><b>5</b> Almendro Community   |
| C/ Bonalba             | <b>6</b> Adelfa Community   |
| Avenida de Las Colinas | <b>7</b> Limonero Community<br><b>8</b> Naranjo Apartments<br><b>9</b> Villas Acacia 3                      |



# Almendro community

## Villas



# Almendro

## VILLA 5

This 3 bedrooms two-floor house offers 231m<sup>2</sup> of built home on 1.000m<sup>2</sup> plot.

This house features Underfloor heating in bathrooms, Air Conditioning, Swimming pool, Home Automation System, 1 Ensuite bathroom and Solarium.

It is fully equipped with furniture, home appliances and roller blinds.



### Features

Bedrooms	3+1
Bathrooms	3
<hr/>	
Plot area	1.000m <sup>2</sup>
House area	231m <sup>2</sup>
Open terraces	48m <sup>2</sup>
Solarium	42m <sup>2</sup>
Swimming pool	31.5m <sup>2</sup>
Garage	30m <sup>2</sup>

# Almendro

## Villa 5

### PLOT PLAN



### Features

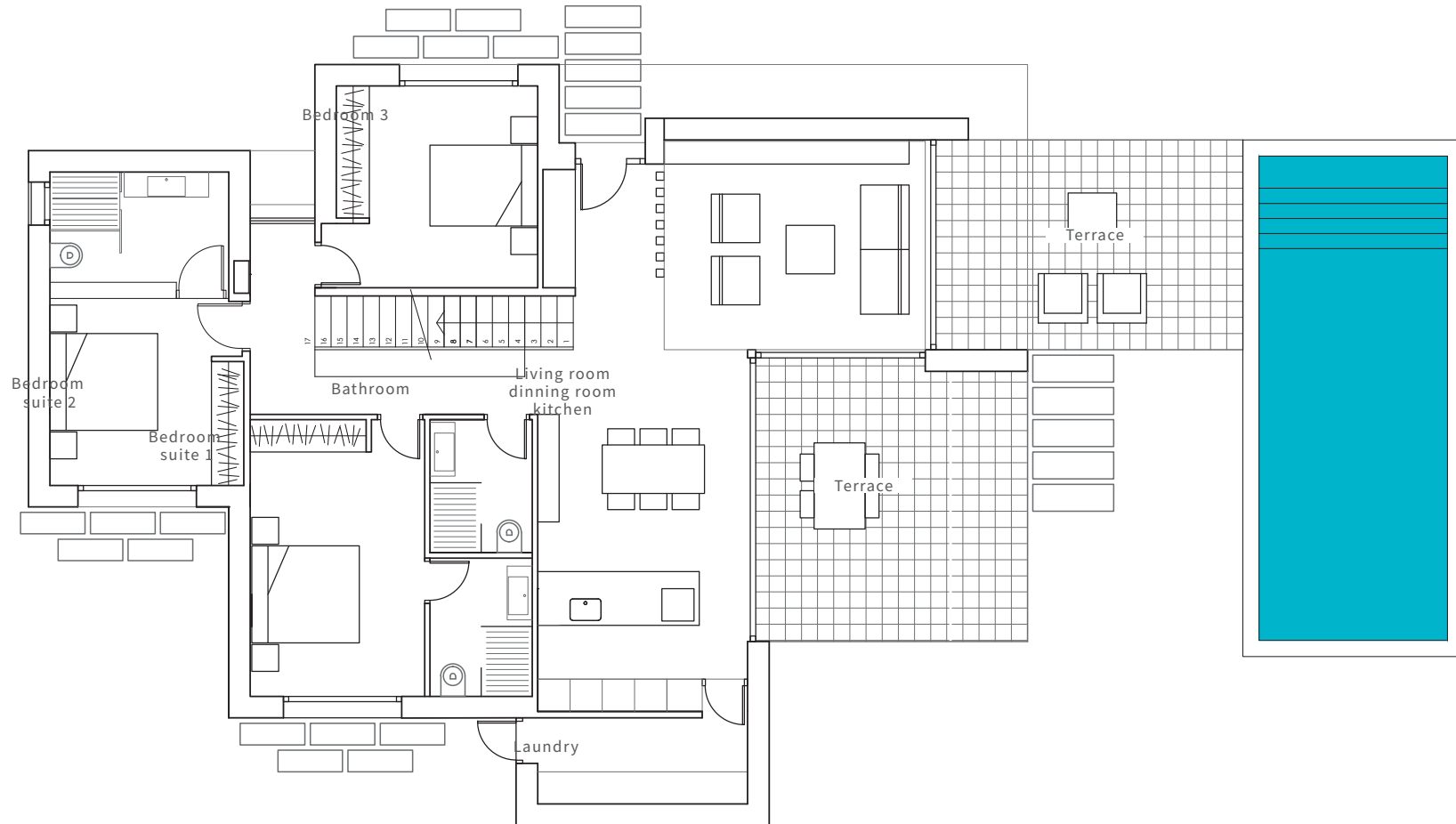
Basement	37,86m <sup>2</sup>
Ground floor	163,53m <sup>2</sup>
First floor	33,95m <sup>2</sup>
.....	
Total	235,34m <sup>2</sup>
Terraces	47m <sup>2</sup>
Solarium	42m <sup>2</sup>
Swimming pool	31,5m <sup>2</sup>



# Almendro

## Villa 5

### GROUND FLOOR

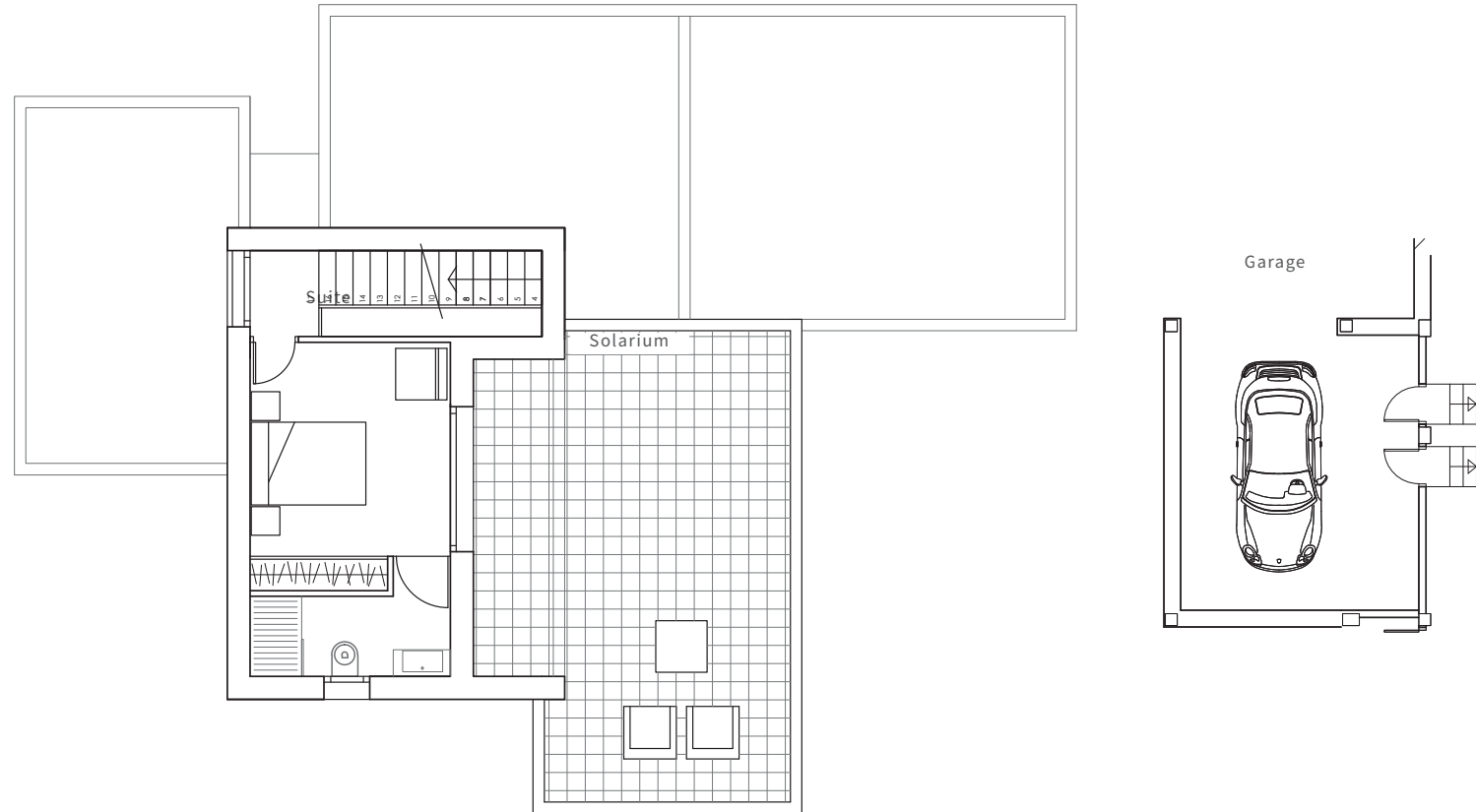




# Almendro

## Villa 5

FIRST FLOOR







# Almendro

VILLA 7

This 3 bedrooms two-floor house offers 172m<sup>2</sup> of built home on a 770m<sup>2</sup> plot. This house features Underfloor heating in bathrooms, Air Conditioning, Swimming pool, Home Automation System, 1 Ensuite bathroom and Solarium.

It is fully equipped with furniture, home appliances and roller blinds.



## Features

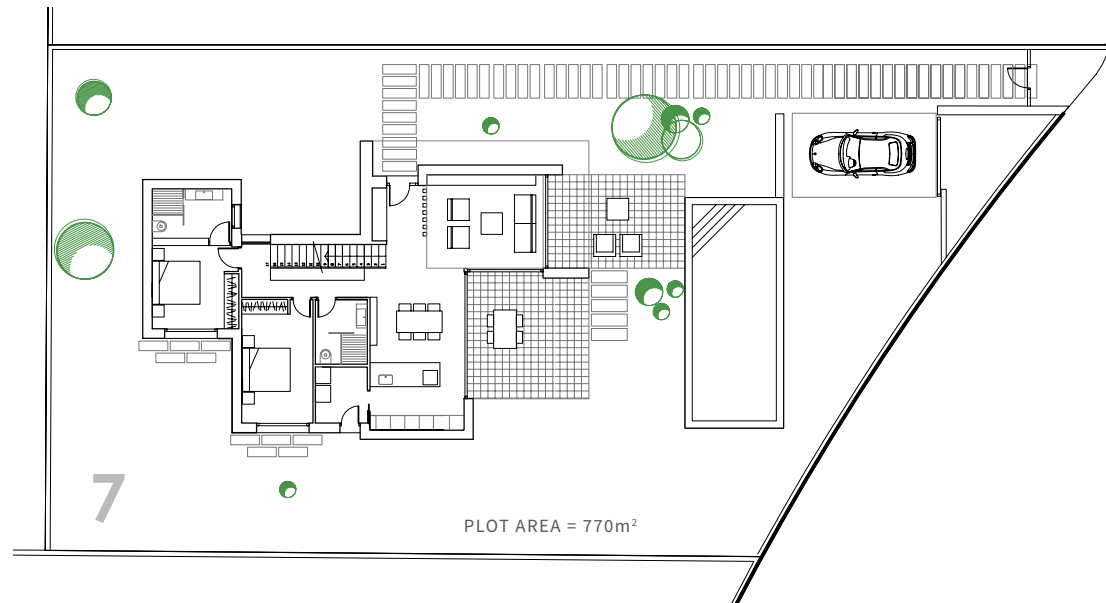
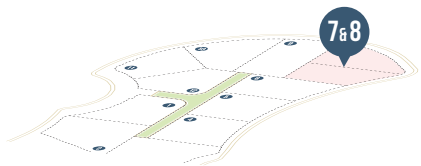
Bedrooms	3
Bathrooms	3
Plot area	770m <sup>2</sup>
House area	172m <sup>2</sup>
Open terraces	48,3m <sup>2</sup>
Solarium	34.5m <sup>2</sup>
Swimming pool	31.5m <sup>2</sup>

This image is only for illustrative proposes and not binding.

# Almendro

## Villa 7

### PLOT PLAN



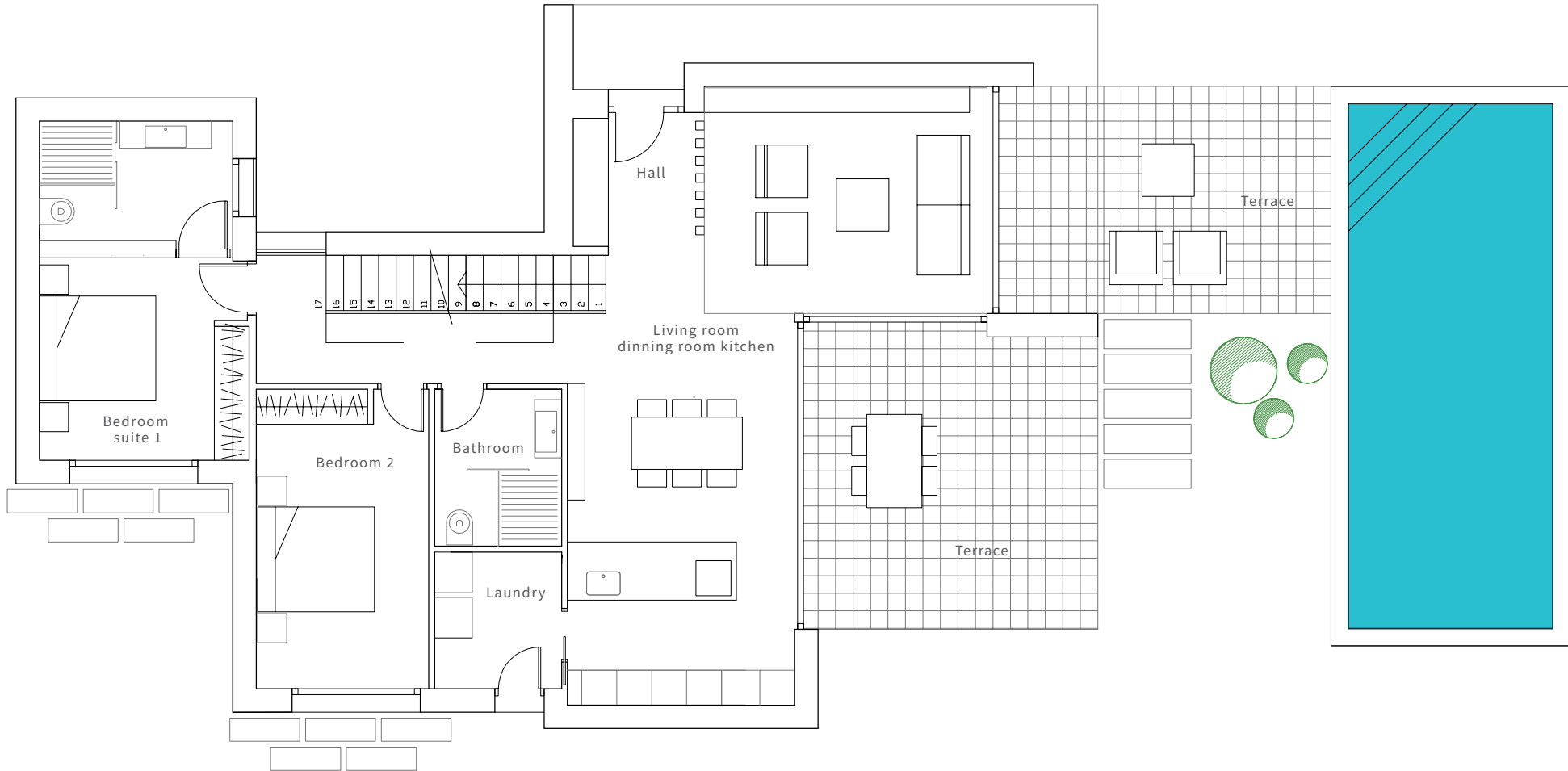
### Features

Ground floor	135,00m <sup>2</sup>
First floor	37,00m <sup>2</sup>
Total	172,00m <sup>2</sup>
<hr/>	
Terrace	48,37m <sup>2</sup>
Solarium	34,50m <sup>2</sup>

# Almendro

## Villa 7

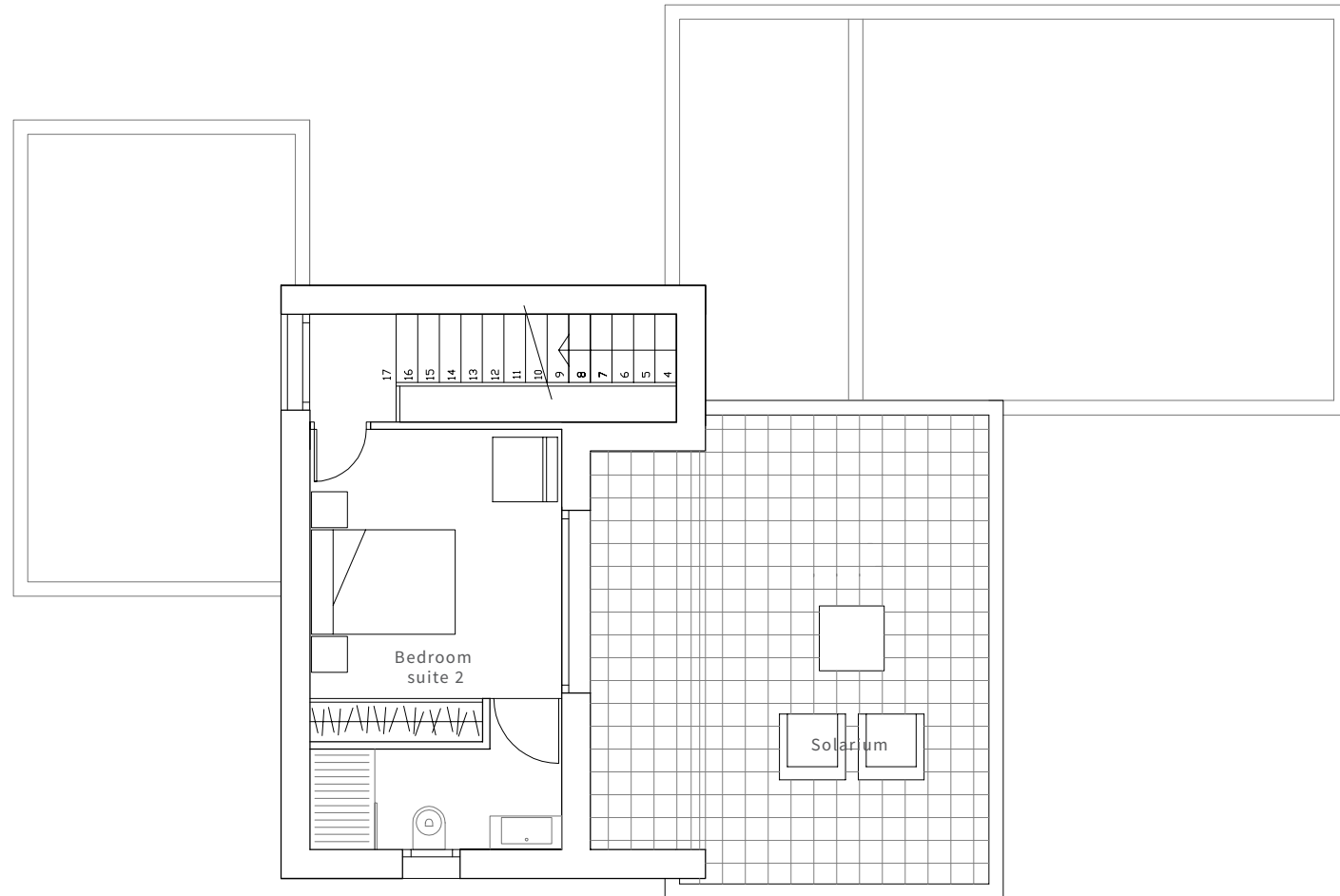
### GROUND FLOOR



# Almendro

## Villa 7

### FIRST FLOOR



### Features

Ground floor	135,00m <sup>2</sup>
First floor	37,00m <sup>2</sup>
Total	172,00m <sup>2</sup>

---

Terrace	48,37m <sup>2</sup>
Solarium	34,50m <sup>2</sup>

# Quality specifications

## *Construction features*

---

### **FOUNDATIONS AND STRUCTURE**

Reinforced concrete with separate footings and one way slabs.

### **EXTERIOR BRICKWORK**

Ceramic brick walls (exterior part - 12 cm) with air compartment and high density polystyrene insulation (8 cm) and thermal clay block (19 cm).

### **ROOF**

Flat unexploited roof and inverted flat roof (exploited), both with extruded polystyrene insulation (8 cm) in Cuco Model.

Flat unexploited roof with extruded polystyrene insulation (8 cm) in Gavilán Model.

### **FAÇADE**

Single layer mortar with a scraped finish. In white color.

### **INTERNAL WALLS**

Brick with plaster finish.

### **BATHROOM FINISHES**

Top of the range "Gres" ceramics according to the latest design.

### **INTERIOR AND EXTERIOR FLOORING**

Interior, top of the range "Gres" ceramics and skirting tiles of the same material

Exterior, top of the range "Gres" anti-slip ceramics of the same range as interior floor tiles

### **INTERIOR AND EXTERIOR LIGHTING**

Interior, LED type lights, ceiling spotlights, switches in white color throughout and plugs according to standard regulations

Exterior, façade fixtures, garden lights that blend naturally with exterior design

### **EXTERIOR CARPENTRY**

Lacquered aluminum door systems, Schüco brand, with thermal break

Motorized Venetian blinds with adjustable slats in bedrooms

### **GLASS**

Double glazing with air chamber according to Technical Building Code

Main entrance door in aluminum and glass with security lock

Glass screen in bathroom

### **PAINTWORK**

Smooth finish in white colour

Decorative wallpaper on bed headboards wall



# Home equipment

---

## INTERIOR CARPENTRY

### Kitchen:

Fitted with base and wall units, equipped with induction cooktop and extractor with energy efficiency class A++.

Single sink in stainless steel, single-handle mixer tap.

Silestone quartz worktop or similar.

### Interior doors:

In smooth lacquered finish, with steel designer handles in chrome finish, door flashings.

### Wardrobes:

Wardrobe with swing doors in wood with smooth lacquered finish. Interior distribution with shelves, drawers and hanger bar, adapted to the dimensions.

### Bathroom units:

Complete designer bathroom vanity unit and mirror with integrated lighting.

## BATHROOM FITTINGS AND TAPS

ROCA sanitary ware, including complete bathroom vanity unit with mirror.

Wall mounted bathroom and sanitary fittings.

ROCA range in white colour.

Bathroom sink atop a cabinet.

Floor level shower in the same material as interior flooring. Thermostatic taps in chrome finish.

Basin: Single handle tap in chrome finish, with aerator for water efficiency.

Osmosis system.

## HEATING AND AIR CONDITIONING

Air conditioning with heat pump through ducts

Pre-installation for electric towel rails in bathrooms.

Electric underfloor heating in bathrooms

Pre-installation for underfloor heating throughout.

Ventilation system with heat recovery

Solar panel support for DHW.

Water boiler NUOS Ariston (Aerothermia).

## EXTERIOR

### Pool:

Swimming pool with LED lighting.

Tile finish in color according to landscaping.

Salt-water electrolysis system and automatic PH regulator.

### Garden:

Standard landscaping finish with watering system and lighting.

### Fence:

Main fence, stone masonry wall.

### Dividing walls:

House area - plastic wire mesh in green colour with hedge.

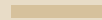
## SPECIAL INSTALLATIONS

Smart Home Technology System 3.0. with video interphone.

Osmosis water filter system in kitchen.

Ask for specific property information on special installations.

## ALMENDRO COMMUNITY



PLOT	MODEL	BEDROOMS	BATHROOMS	HOME AREA	TERRACES	SOLARIUM	GARAGE	SWIMMING POOL	PLOT	PRICE	DELIVERY
5	VILLA CUCO	3+1	3	231m <sup>2</sup>	48m <sup>2</sup>	42m <sup>2</sup>	30m <sup>2</sup>	3,5x9	1.000m <sup>2</sup>	845.000€	FULL EQUIP
7	VILLA CUCO	3	3	172m <sup>2</sup>	48m <sup>2</sup>	34,5m <sup>2</sup>	-	3,5x9	770m <sup>2</sup>	690.000€	FULL EQUIP



## ALMENDRO COMMUNITY – PLOT 5

### QUALITY SPECIFICATIONS

#### **FOUNDATIONS AND STRUCTURE**

---

- Reinforced concrete with separate footings and one way slabs.

#### **EXTERIOR BRICKWORK**

---

- Ceramic brick walls (exterior part - 12 cm) with air compartment and high density polystyrene insulation (8 cm) and thermal clay block (19 cm).

#### **ROOF**

---

- Flat unexploited roof and inverted flat roof (exploited) with terrazzo finish, both with extruded polystyrene insulation (8 cm).

#### **FAÇADE**

---

- Single layer mortar with a scraped finish. In white color.

#### **INTERNAL WALLS**

---

- Brick with plaster finish.

#### **BATHROOM FINISHES**

---

- Top of the range “Gres” ceramics according to the latest design.

#### **INTERIOR AND EXTERIOR FLOORING**

---

- **Interior**, top of the range “Gres” ceramics and skirting tiles of the same material.
- **Exterior**, top of the range “Gres” anti-slip ceramics of the same range as interior floor tiles.

#### **INTERIOR AND EXTERIOR LIGHTING**

---

- **Interior**, LED type lights, ceiling spotlights, switches in white color throughout and plugs according to standard regulations.
- **Exterior**, façade fixtures, garden lights that blend naturally with exterior design.

#### **EXTERIOR CARPENTRY**

---

- Lounge floor recessed lacquered aluminum with thermal break.
- Motorized venetian blinds with adjustable slats in bedrooms.
- Cassette awnings on south-facing terraces, motorized and remotely controlled.

## INTERIOR CARPENTRY

---

- **Kitchen:**
  - Fitted with base and Wall units, equipped with induction cooktop and extractor with energy efficiency class A++ (Bosch or equivalent brand).
  - Single sink in stainless steel, single-handle mixer tap and shower with two positions.
  - Silestone quartz worktop or similar.
- **Interior doors:**
  - In smooth lacquered finish (of standard height), with steel designer handles in chrome finish, door flashings.
- **Wardrobes:**
  - Wardrobe with swing doors in wood with smooth lacquered finish. Interior distribution with shelves, drawers and hanger bar, adapted to the dimensions.
- **Bathroom units:**
  - Complete designer bathroom vanity unit and mirror with integrated lighting.

## GLASS

---

- Double glazing with air chamber.
- Main entrance door in aluminum and glass with security lock.
- Fixed glass screen in showers.

## BATHROOM FITTINGS AND FAUCETS

---

- ROCA sanitary ware, including complete bathroom vanity unit with mirror.
- Wall mounted bathroom and sanitary fittings. ROCA range in White colour.
- Bathroom sink atop a cabinet according to the latest tendencies.
- Floor level shower in the same material as interior flooring. Thermostatic taps in chrome finish.
- Basin: waterfall single handle tap in chrome finish, with aerator for water efficiency.

## PAINTWORK

---

- Smooth finish in white colour.
- Decorative wallpaper above bed headboards.

## HEATING AND AIR CONDITIONING

---

- Air conditioning with heat pump through ducts.
- Pre-installation for electric towel rails in bathrooms.
- Electric underfloor heating in bathrooms.
- Pre-installation for underfloor heating throughout.

## EXTERIOR

---

- **Pool:** swimming pool de 9x3,5 with beach zone. LED type lighting in blue colour. Tile finish in color according to landscaping. Salt-water electrolysis systems y automatic PH regulator.
- **Garden:** Standard landscaping finish with irrigation system and lighting.
- **Fence:**
  - Main fence, stone masonry wall.
  - Dividing walls: house area - plastic wire mesh in green colour with hedge.
  - Automatic driveway gate.

## SPECIAL INSTALLATIONS

---

- Smart Home Technology System 3.0
- Osmosis water filter system in kitchen.

**PLOT 7 – ALMENDRO COMMUNITY**



## QUALITY SPECIFICATIONS

### FOUNDATIONS AND STRUCTURE

---

- Reinforced concrete with separate footings and one way slabs.

### EXTERIOR BRICKWORK

---

- Ceramic brick walls (exterior part - 12 cm) with air compartment and high density polystyrene insulation (8 cm) and thermal clay block (19 cm).

### ROOF

---

- Flat unexploited roof and inverted flat roof (exploited), both with extruded polystyrene insulation (8 cm).

### FAÇADE

---

- Single layer mortar with a scraped finish. In white color.

### INTERNAL WALLS

---

- Brick with plaster finish.

### BATHROOM FINISHES

---

- Top of the range “Gres” ceramics according to the latest design.

### INTERIOR AND EXTERIOR FLOORING

---

- **Interior**, top of the range “Gres” ceramics and skirting tiles of the same material.
- **Exterior**, top of the range “Gres” anti-slip ceramics of the same range as interior floor tiles.

### INTERIOR AND EXTERIOR LIGHTING

---

- **Interior**, LED type lights, ceiling spotlights, switches in white color throughout and plugs according to standard regulations.
- **Exterior**, façade fixtures, garden lights that blend naturally with exterior design.

### EXTERIOR CARPENTRY

---

- Lounge and kitchen floor recessed lacquered aluminum Schüco (in white colour) with thermal break.
- Motorized venetian blinds with adjustable slats in bedrooms.
- Sail-shaped awning on kitchen terrace.

### INTERIOR CARPENTRY

---

- **Kitchen:**
  - Fitted with base and wall units, equipped with induction cooktop and extractor with energy efficiency class A++.
  - Single sink in stainless steel, single-handle mixer tap.
  - Silestone quartz worktop or similar.



- **Interior doors:**
  - In smooth lacquered finish (of standard height), with steel designer handles in chrome finish, door flashings.
- **Wardrobes:**
  - Wardrobe with swing doors in wood with smooth lacquered finish. Interior distribution with shelves, drawers and hanger bar, adapted to the dimensions.
- **Bathroom units:**
  - Complete designer bathroom vanity unit and mirror with integrated lighting.

## GLASS

---

- Double glazing with air chamber according to Technical Building Code.
- Main entrance door in aluminum and glass with security lock.
- Fixed glass screen and sliding door in en-suite bathroom 2 and guest bathroom.
- Fixed glass screen in en-suite bathroom on the first floor.

## BATHROOM FITTINGS AND FAUCETS

---

- ROCA sanitary ware, including complete bathroom vanity unit with mirror.
- Wall mounted bathroom and sanitary fittings. ROCA range in White colour.
- Bathroom sink atop a cabinet according to the latest tendencies.
- Floor level shower in the same material as interior flooring. Thermostatic taps in chrome finish.
- Basin: waterfall single handle tap in chrome finish, with aerator for water efficiency.
- Osmosis system.

## PAINTWORK

---

- Smooth finish in white colour.
- Decorative wallpaper above bed headboards.

## HEATING AND AIR CONDITIONING

---

- Air conditioning with heat pump through ducts.
- Pre-installation for electric towel rails in bathrooms.
- Electric underfloor heating in bathrooms.
- Pre-installation for underfloor heating throughout.
- Ventilation system with heat recovery.
- Solar panel support for DHW.
- Water boiler NUOS Ariston (Aerothermia).

## EXTERIOR

---

- **Pool:** swimming pool of 9x3,5 with beach zone of 2x2,5 . LED type lighting in blue colour. Tile finish in color according to landscaping.
- **Garden:** Standard landscaping finish with watering system and lighting.
- **Fence:**
  - Main fence, stone masonry wall.
  - Dividing walls: house area - plastic wire mesh in green colour with hedge.

## SPECIAL INSTALLATIONS

---

- Smart Home Technology System 3.0. with video interphone.

**PLOT 8 – ALMENDRO COMMUNITY**



## QUALITY SPECIFICATIONS

### FOUNDATIONS AND STRUCTURE

---

- Reinforced concrete with separate footings and one way slabs.

### EXTERIOR BRICKWORK

---

- Ceramic brick walls (exterior part - 12 cm) with air compartment and high density polystyrene insulation (8 cm) and thermal clay block (19 cm).

### ROOF

---

- Flat unexploited roof and inverted flat roof (exploited), both with extruded polystyrene insulation (8 cm).

### FAÇADE

---

- Single layer mortar with a scraped finish. In white color.

### INTERNAL WALLS

---

- Brick with plaster finish.

### BATHROOM FINISHES

---

- Top of the range “Gres” ceramics according to the latest design.

### INTERIOR AND EXTERIOR FLOORING

---

- **Interior**, top of the range “Gres” ceramics and skirting tiles of the same material.
- **Exterior**, top of the range “Gres” anti-slip ceramics of the same range as interior floor tiles.

### INTERIOR AND EXTERIOR LIGHTING

---

- **Interior**, LED type lights, ceiling spotlights, switches in white color throughout and plugs according to standard regulations.
- **Exterior**, façade fixtures, garden lights that blend naturally with exterior design.

### EXTERIOR CARPENTRY

---

- Lounge and kitchen floor recessed lacquered aluminum Schüco (in white colour) with thermal break.
- Motorized venetian blinds with adjustable slats in bedrooms.
- Sail-shaped awning on kitchen terrace.

### INTERIOR CARPENTRY

---

- **Kitchen:**
  - Fitted with base and wall units, equipped with induction cooktop and extractor with energy efficiency class A++.
  - Single sink in stainless steel, single-handle mixer tap.

- Silestone quartz worktop or similar.
- **Interior doors:**
  - In smooth lacquered finish (of standard height), with steel designer handles in chrome finish, door flashings.
- **Wardrobes:**
  - Wardrobe with swing doors in wood with smooth lacquered finish. Interior distribution with shelves, drawers and hanger bar, adapted to the dimensions.
- **Bathroom units:**
  - Complete designer bathroom vanity unit and mirror with integrated lighting.

## GLASS

---

- Double glazing with air chamber according to Technical Building Code.
- Main entrance door in aluminum and glass with security lock.
- Fixed glass screen and sliding door in en-suite bathroom 2 and guest bathroom.
- Fixed glass screen in en-suite bathroom on the first floor.

## BATHROOM FITTINGS AND FAUCETS

---

- ROCA sanitary ware, including complete bathroom vanity unit with mirror.
- Wall mounted bathroom and sanitary fittings. ROCA range in White colour.
- Bathroom sink atop a cabinet according to the latest tendencies.
- Floor level shower in the same material as interior flooring. Thermostatic taps in chrome finish.
- Basin: waterfall single handle tap in chrome finish, with aerator for water efficiency.
- Osmosis system.

## PAINTWORK

---

- Smooth finish in white colour.
- Decorative wallpaper above bed headboards.

## HEATING AND AIR CONDITIONING

---

- Air conditioning with heat pump through ducts.
- Pre-installation for electric towel rails in bathrooms.
- Electric underfloor heating in bathrooms.
- Pre-installation for underfloor heating throughout.
- Ventilation system with heat recovery.
- Solar panel support for DHW.
- Water boiler NUOS Ariston (Aerothermia).

## EXTERIOR

---

- **Pool:** swimming pool of 9x3,5 and beach zone of 2x2,5. LED type lighting in blue colour. Tile finish in color according to landscaping.
- **Garden:** Standard landscaping finish with watering system and lighting.
- **Fence:**
  - Main fence, stone masonry wall.
  - Dividing walls: house area - plastic wire mesh in green colour with hedge.

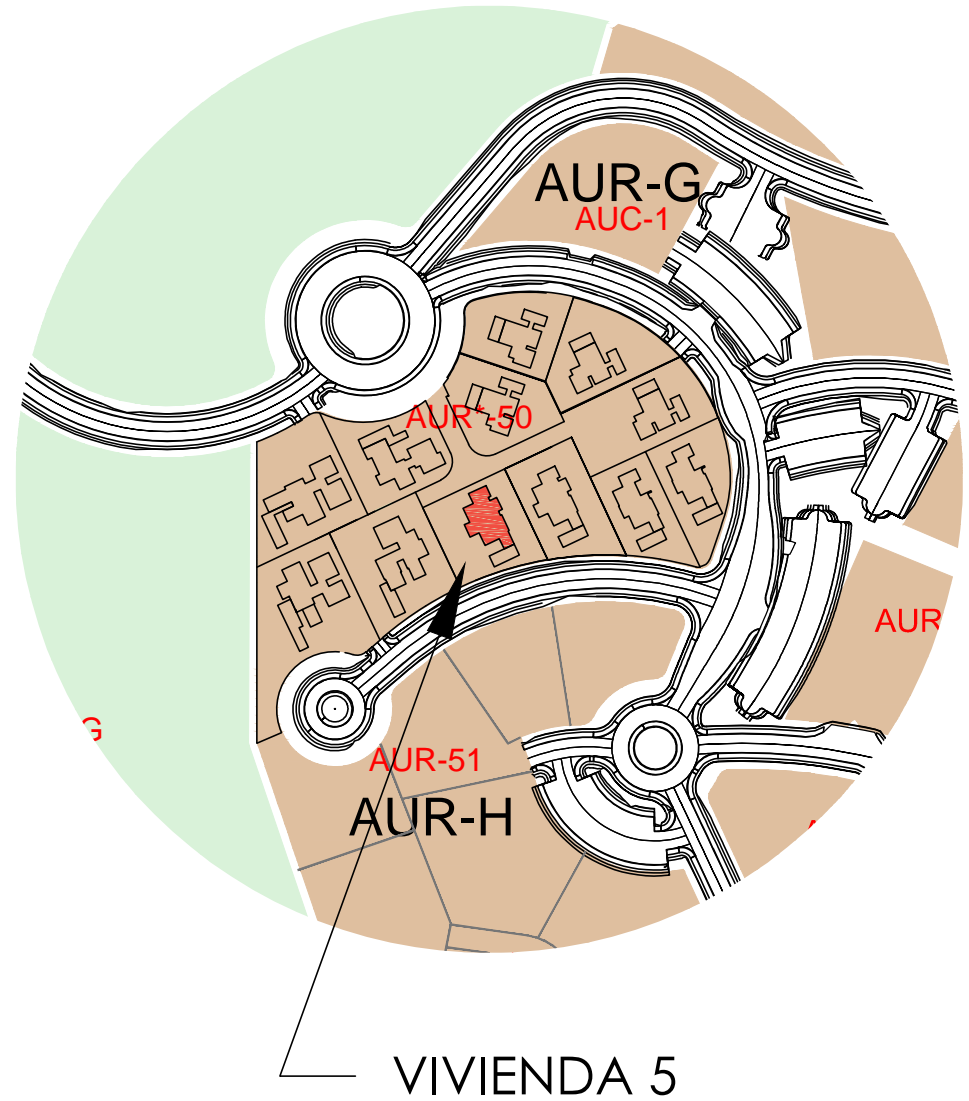
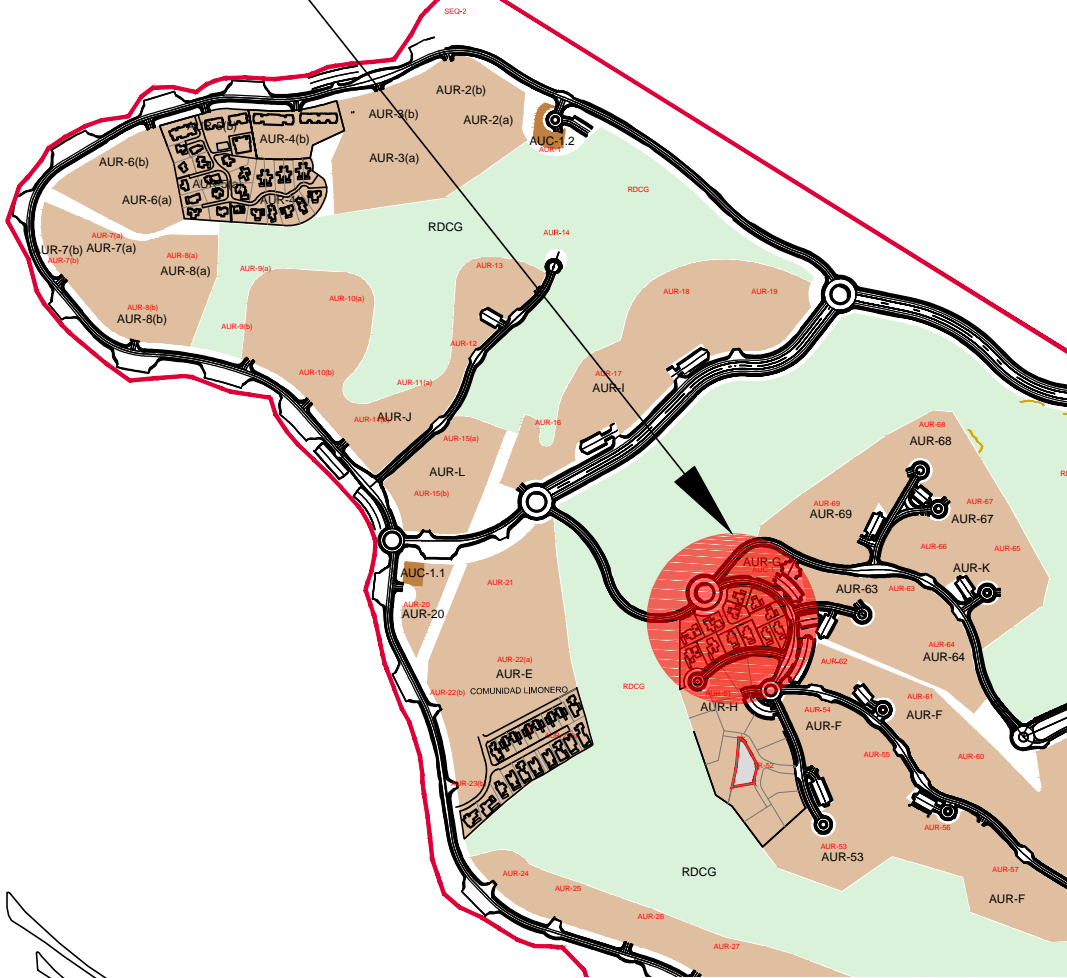
## **SPECIAL INSTALLATIONS**

---

- Smart Home Technology System 3.0. with video interphone.

# LAS COLINAS , ORIHUELA

## COMUNIDAD ALMENDRO



**GRUPOMARJAL**

**COMUNIDAD ALMENDRO**

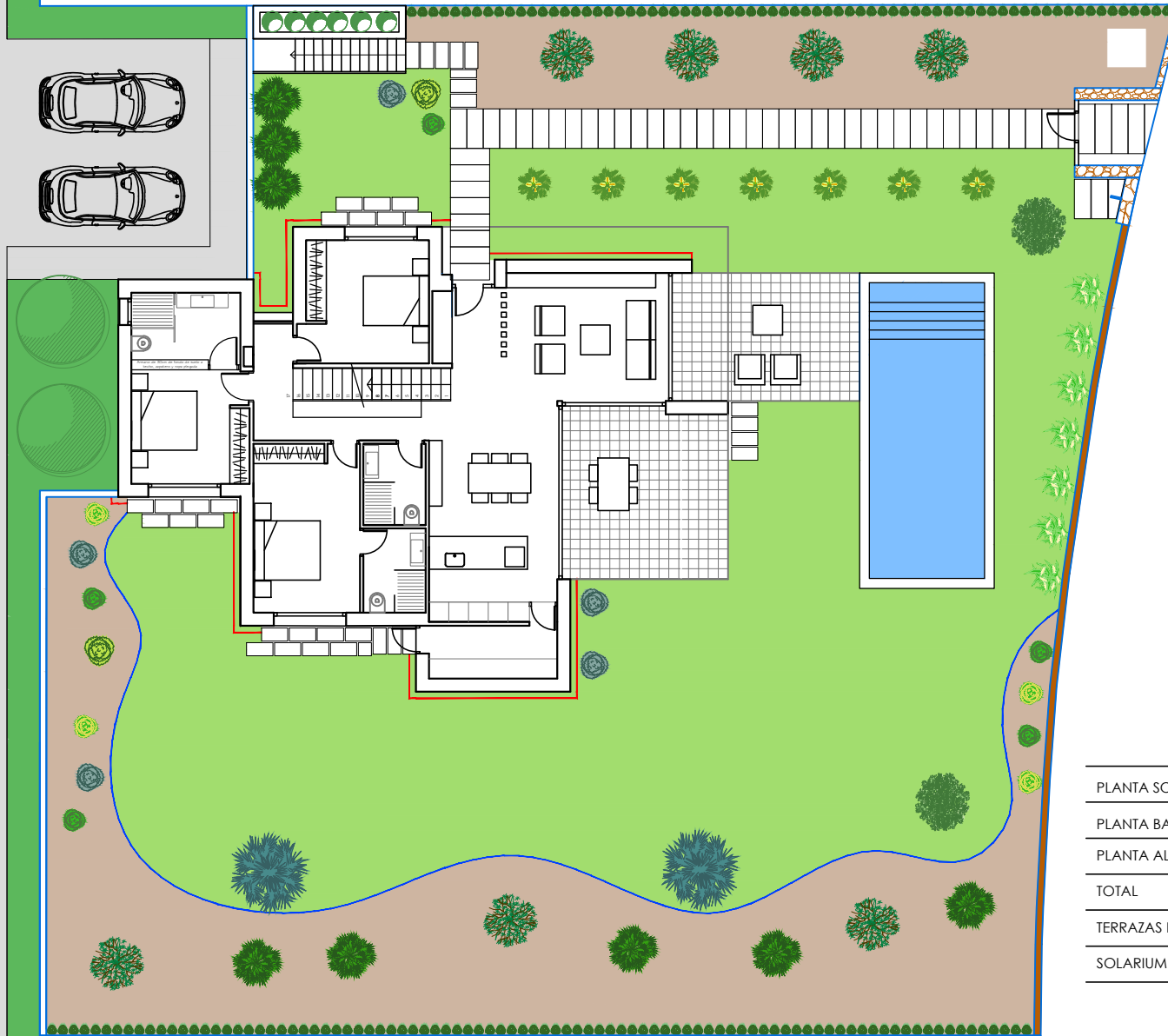
**ALMENDRO 5**

**PLANTA DE SITUACIÓN**

**SIN ESCALA**

SUP. PARCELA = 1.000 m<sup>2</sup>

140,00



	SUP. CONSTRUIDA
PLANTA SOTANO	37,86 m <sup>2</sup>
PLANTA BAJA	163,53 m <sup>2</sup>
PLANTA ALTA	33,95 m <sup>2</sup>
TOTAL	235,34 m <sup>2</sup>
TERRAZAS DESCUBIERTAS	47,00 m <sup>2</sup>
SOLARIUM	42,00 m <sup>2</sup>

**GRUPOMARJAL**

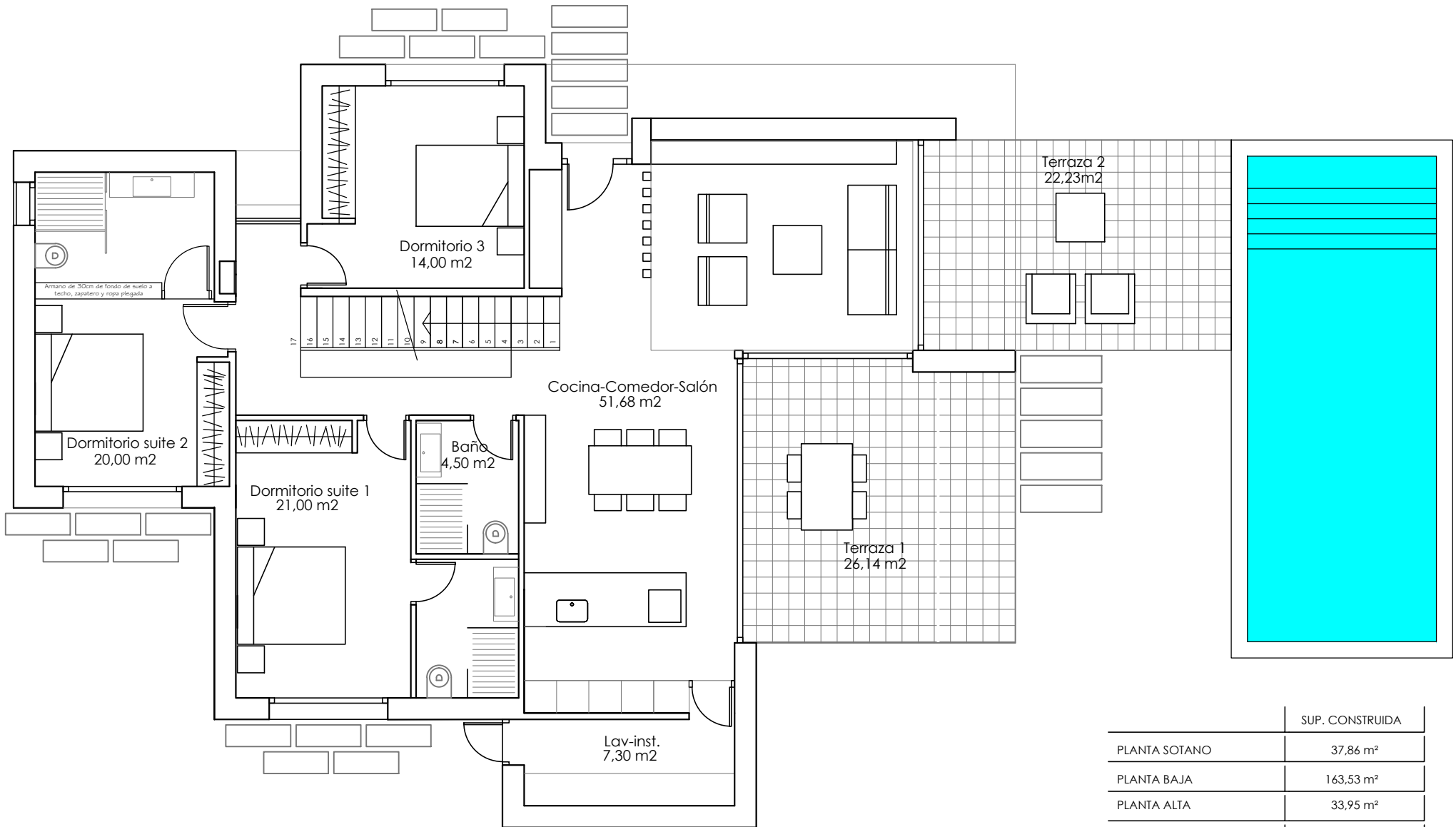
**COMUNIDAD ALMENDRO**

**ALMENDRO 9**

**PLANTA PARCELA**

**1/200**





	SUP. CONSTRUIDA
PLANTA SOTANO	37,86 m <sup>2</sup>
PLANTA BAJA	163,53 m <sup>2</sup>
PLANTA ALTA	33,95 m <sup>2</sup>
TOTAL	235,34 m <sup>2</sup>
TERRAZAS DESCUBIERTAS	47,00 m <sup>2</sup>
SOLARIUM	42,00 m <sup>2</sup>

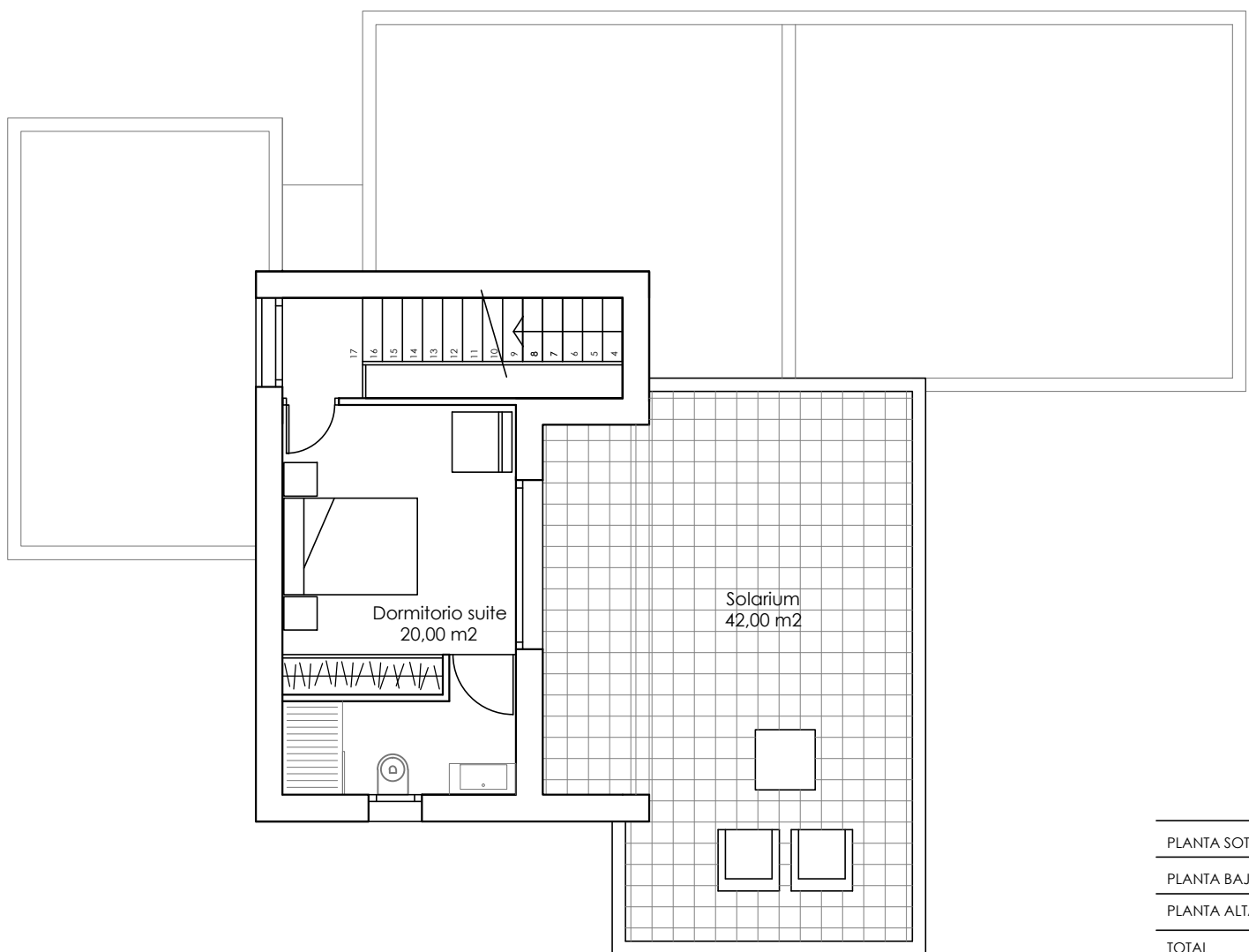
**GRUPOMARJAL**

**COMUNIDAD ALMENDRO**

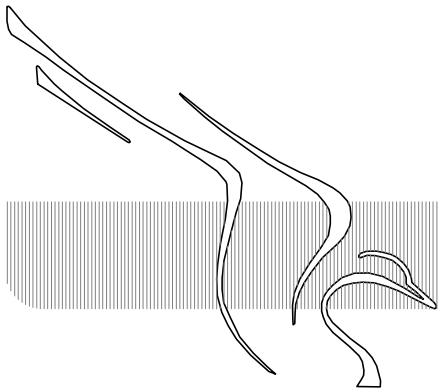
**ALMENDRO 5**

**PLANTA BAJA**

**1/100**



	SUP. CONSTRUIDA
PLANTA SOTANO	37,86 m <sup>2</sup>
PLANTA BAJA	163,53 m <sup>2</sup>
PLANTA ALTA	33,95 m <sup>2</sup>
TOTAL	235,34 m <sup>2</sup>
TERRAZAS DESCUBIERTAS	47,00 m <sup>2</sup>
SOLARIUM	42,00 m <sup>2</sup>



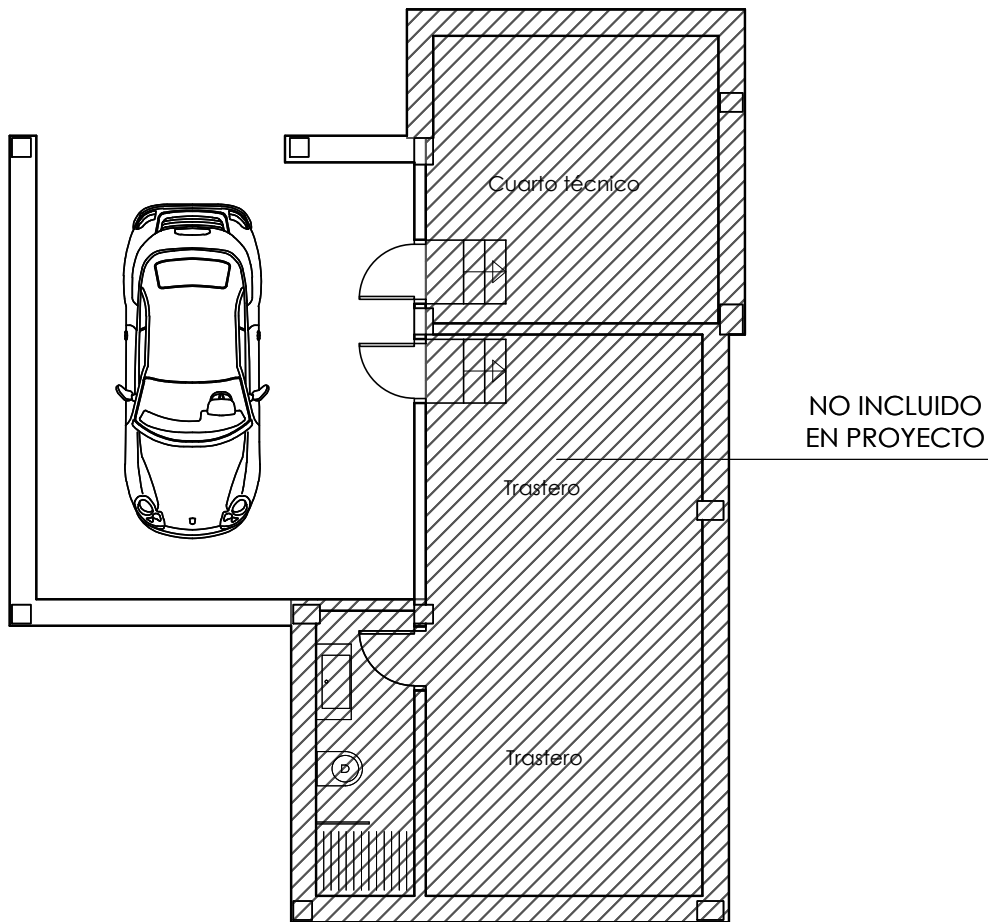
**GRUPOMARJAL**

**COMUNIDAD ALMENDRO**

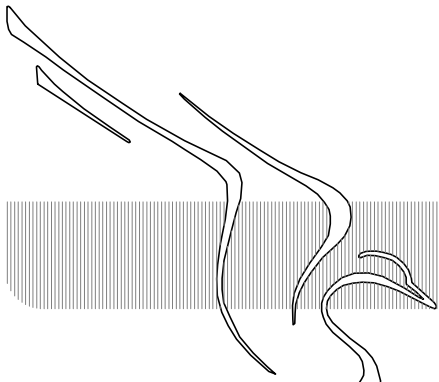
**ALMENDRO 5**

**PLANTA PRIMERA**

**1/100**



	SUP. CONSTRUIDA
PLANTA SOTANO	37,86 m <sup>2</sup>
PLANTA BAJA	163,53 m <sup>2</sup>
PLANTA ALTA	33,95 m <sup>2</sup>
TOTAL	235,34 m <sup>2</sup>
TERRAZAS DESCUBIERTAS	47,00 m <sup>2</sup>
SOLARIUM	42,00 m <sup>2</sup>



**GRUPOMARJAL**

**COMUNIDAD ALMENDRO**

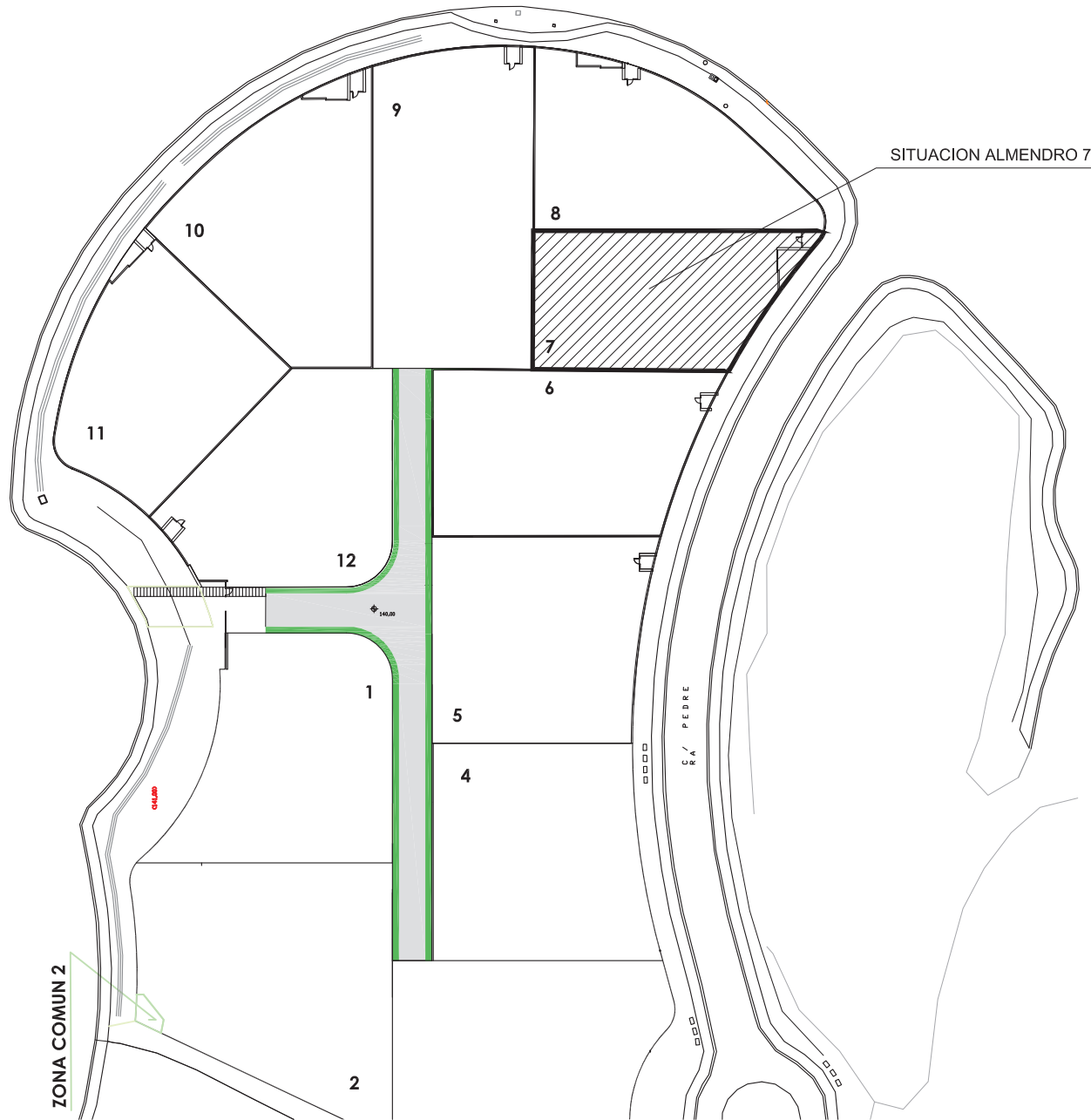
**ALMENDRO 5**

**PLANTA PRIMERA**

**1/100**

# Un mundo aparte para vivir: Villa Cuco 7





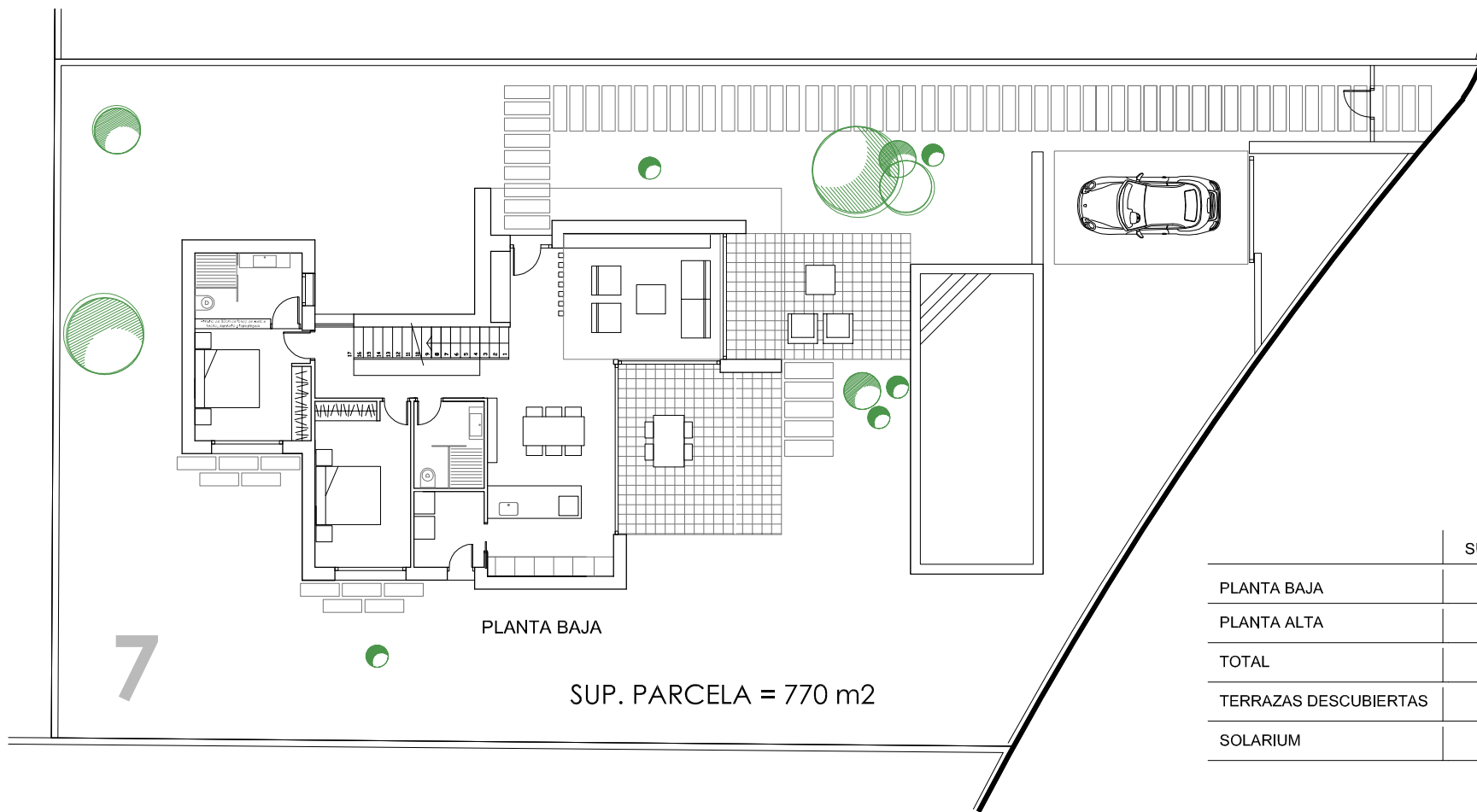
**GRUPOMARJAL**

COMUNIDAD ALMENDRO. LAS COLINAS

VILLA CUCO 7

SITUACION

1/1000



	SUP. CONSTRUIDA
PLANTA BAJA	135,00 m <sup>2</sup>
PLANTA ALTA	37,00 m <sup>2</sup>
TOTAL	172,00 m <sup>2</sup>
TERRAZAS DESCUBIERTAS	48,37 m <sup>2</sup>
SOLARIUM	34,50 m <sup>2</sup>

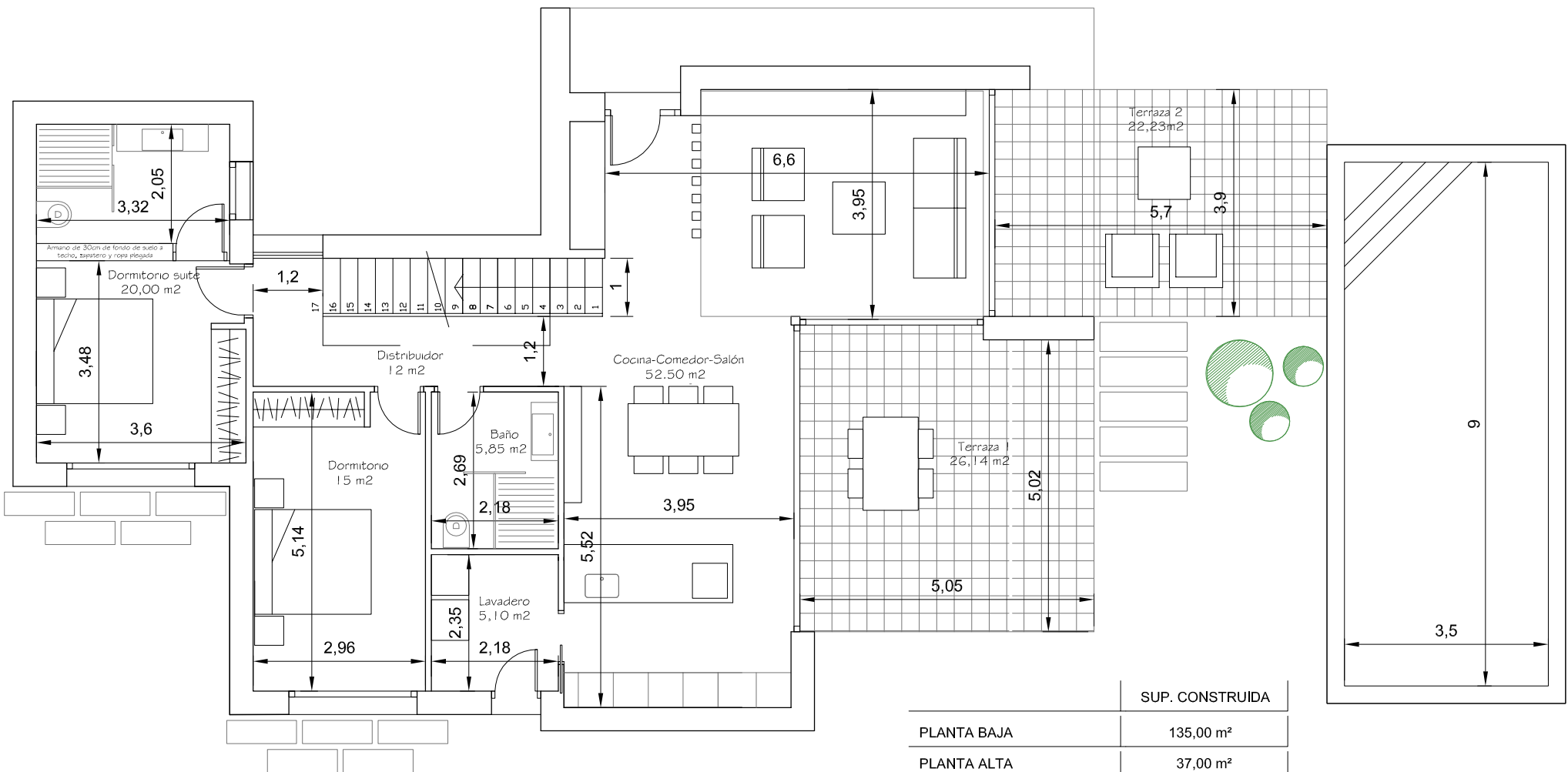
**GRUPOMARJAL**

COMUNIDAD ALMENDRO. LAS COLINAS

VILLA CUCO 7

EMPLAZAMIENTO EN PARCELA

1/200



### PLANTA BAJA

	SUP. CONSTRUIDA
PLANTA BAJA	135,00 m <sup>2</sup>
PLANTA ALTA	37,00 m <sup>2</sup>
TOTAL	172,00 m <sup>2</sup>
TERRAZAS DESCUBIERTAS	48,37 m <sup>2</sup>
SOLARIUM	34,50 m <sup>2</sup>

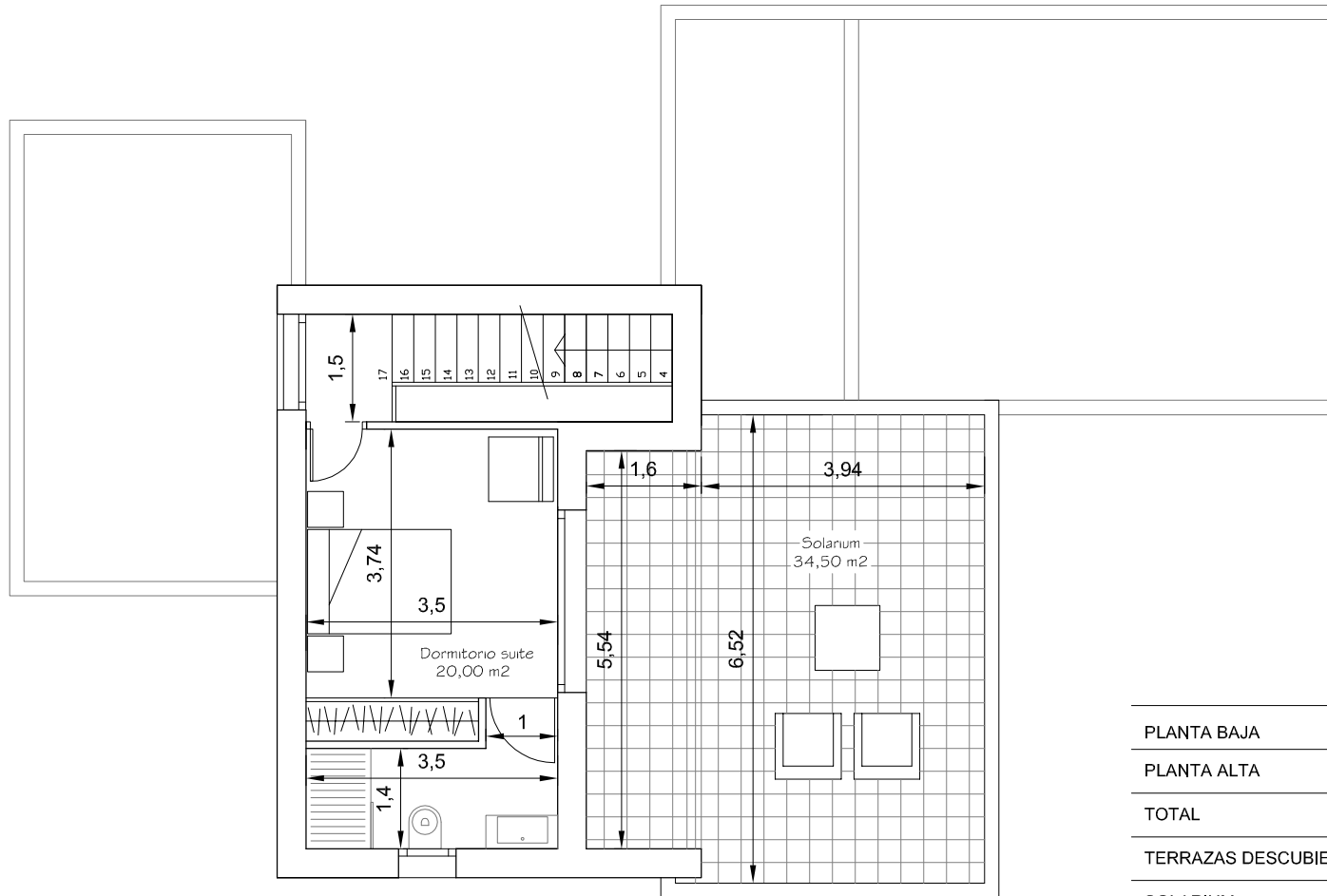
**GRUPOMARJAL**

COMUNIDAD ALMENDRO. LAS COLINAS

VILLA CUCO 7

PLANTA BAJA

1/100



	SUP. CONSTRUIDA
PLANTA BAJA	135,00 m <sup>2</sup>
PLANTA ALTA	37,00 m <sup>2</sup>
TOTAL	172,00 m <sup>2</sup>
TERRAZAS DESCUBIERTAS	48,37 m <sup>2</sup>
SOLARIUM	34,50 m <sup>2</sup>

## PLANTA ALTA

**GRUPOMARJAL**

COMUNIDAD ALMENDRO. LAS COLINAS

VILLA CUCO 7

PLANTA ALTA

1/100



# Un mundo aparte para vivir: Villa Cuco 8



SITUACION ALMENDRO 8



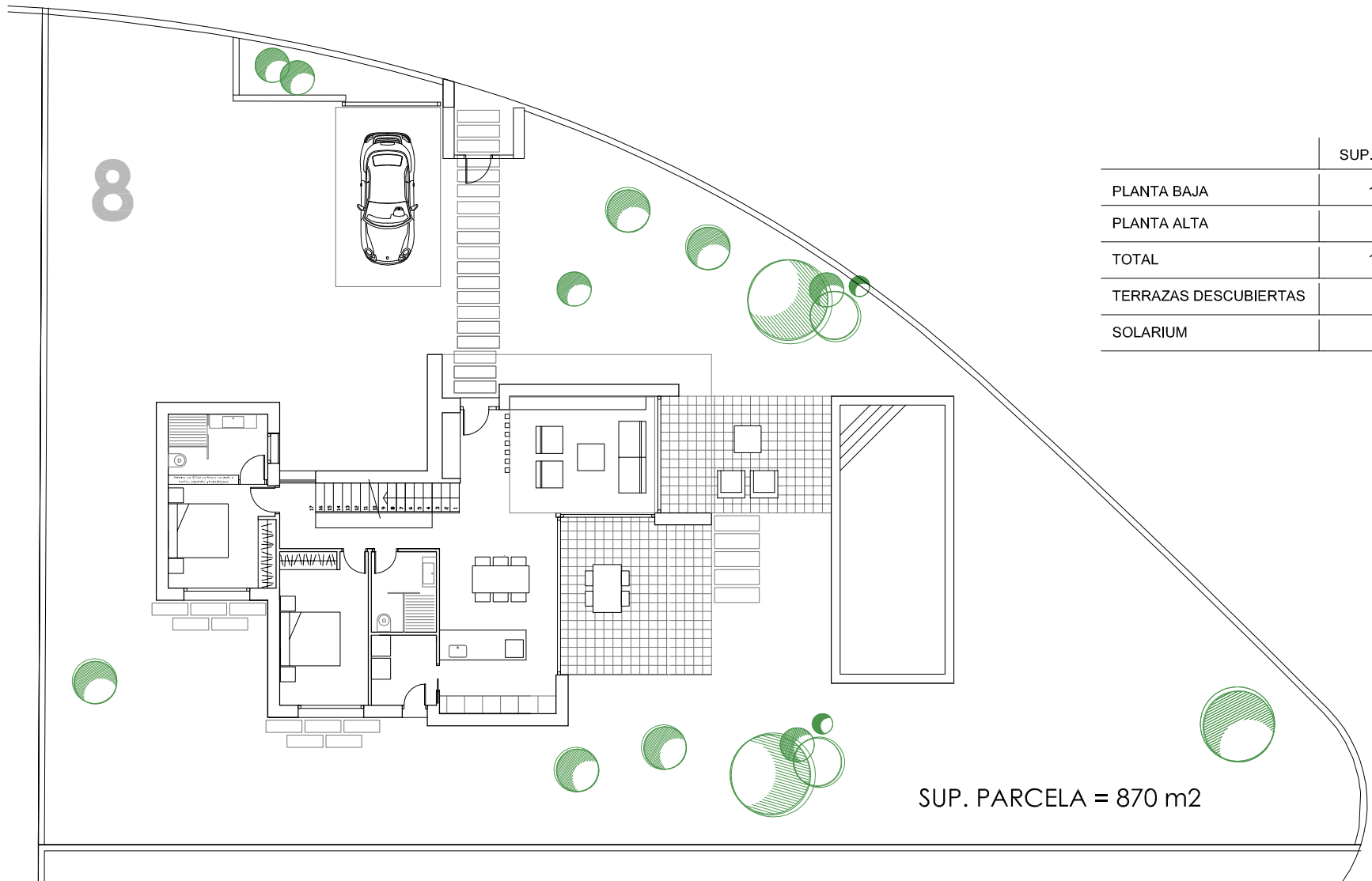
**GRUPOMARJAL**

COMUNIDAD ALMENDRO. LAS COLINAS

VILLA CUCO 8

SITUACION

1/1000



	SUP. CONSTRUIDA
PLANTA BAJA	135,00 m <sup>2</sup>
PLANTA ALTA	37,00 m <sup>2</sup>
TOTAL	172,00 m <sup>2</sup>
TERRAZAS DESCUBIERTAS	48,37 m <sup>2</sup>
SOLARIUM	34,50 m <sup>2</sup>

SUP. PARCELA = 870 m<sup>2</sup>

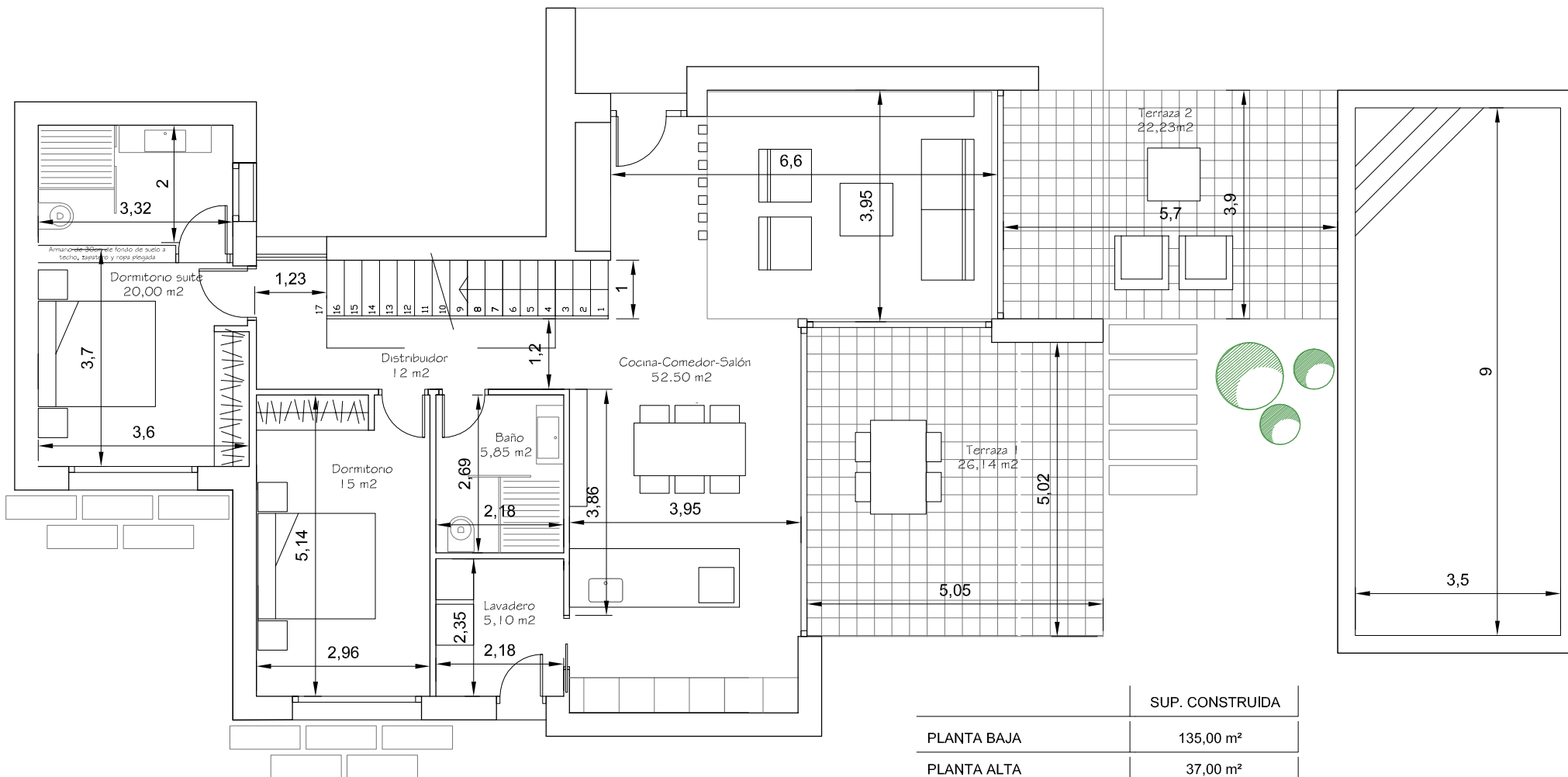
**GRUPOMARJAL**

COMUNIDAD ALMENDRO. LAS COLINAS

VILLA CUCO 8

EMPLAZAMIENTO EN PARCELA

1/200



## PLANTA BAJA

	SUP. CONSTRUIDA
PLANTA BAJA	135,00 m <sup>2</sup>
PLANTA ALTA	37,00 m <sup>2</sup>
TOTAL	172,00 m <sup>2</sup>
TERRAZAS DESCUBIERTAS	48,37 m <sup>2</sup>
SOLARIUM	34,50 m <sup>2</sup>

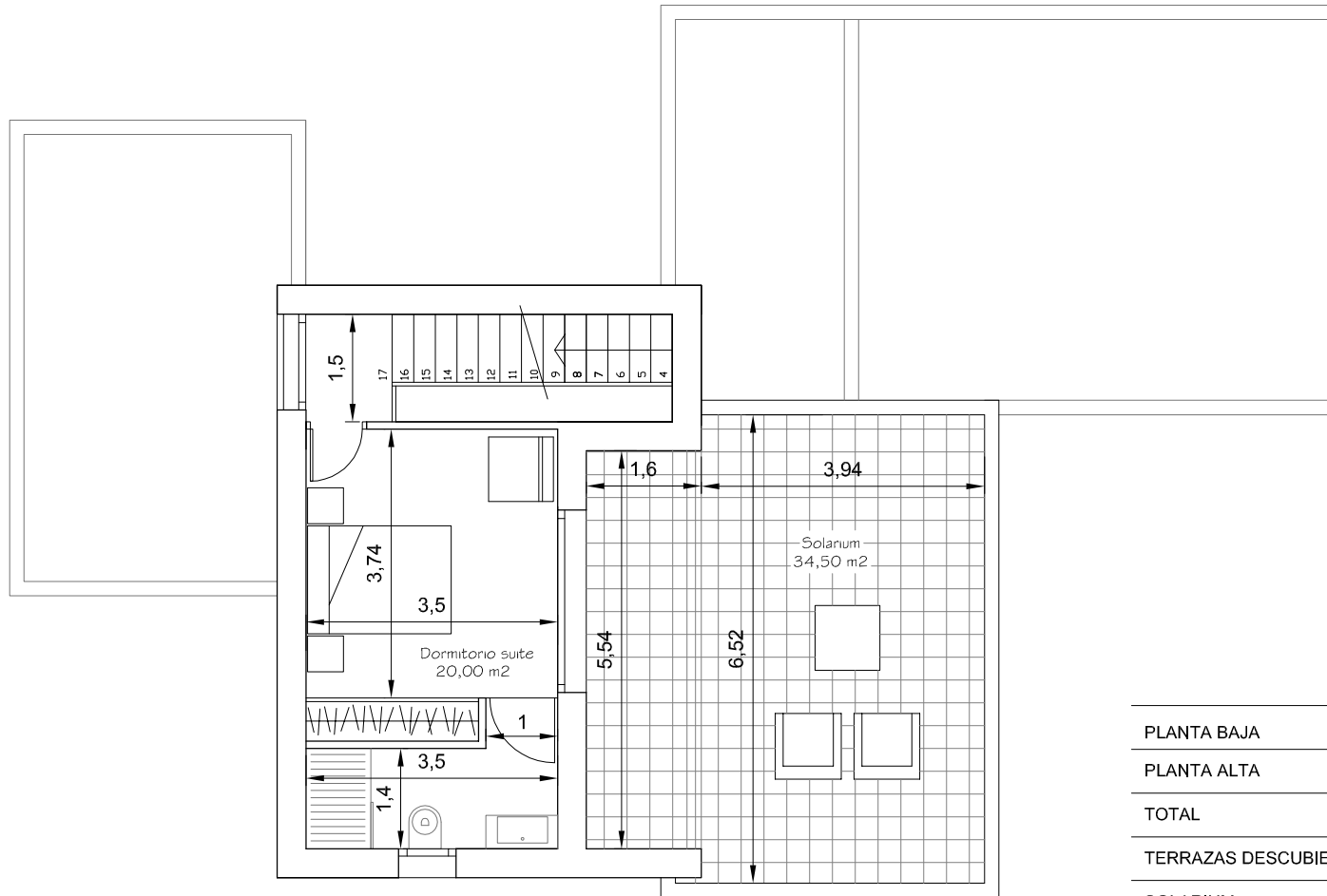
**GRUPOMARJAL**

COMUNIDAD ALMENDRO. LAS COLINAS

VILLA CUCO 8

PLANTA BAJA

1/100



	SUP. CONSTRUIDA
PLANTA BAJA	135,00 m <sup>2</sup>
PLANTA ALTA	37,00 m <sup>2</sup>
TOTAL	172,00 m <sup>2</sup>
TERRAZAS DESCUBIERTAS	48,37 m <sup>2</sup>
SOLARIUM	34,50 m <sup>2</sup>

## PLANTA ALTA

**GRUPOMARJAL**

COMUNIDAD ALMENDRO. LAS COLINAS

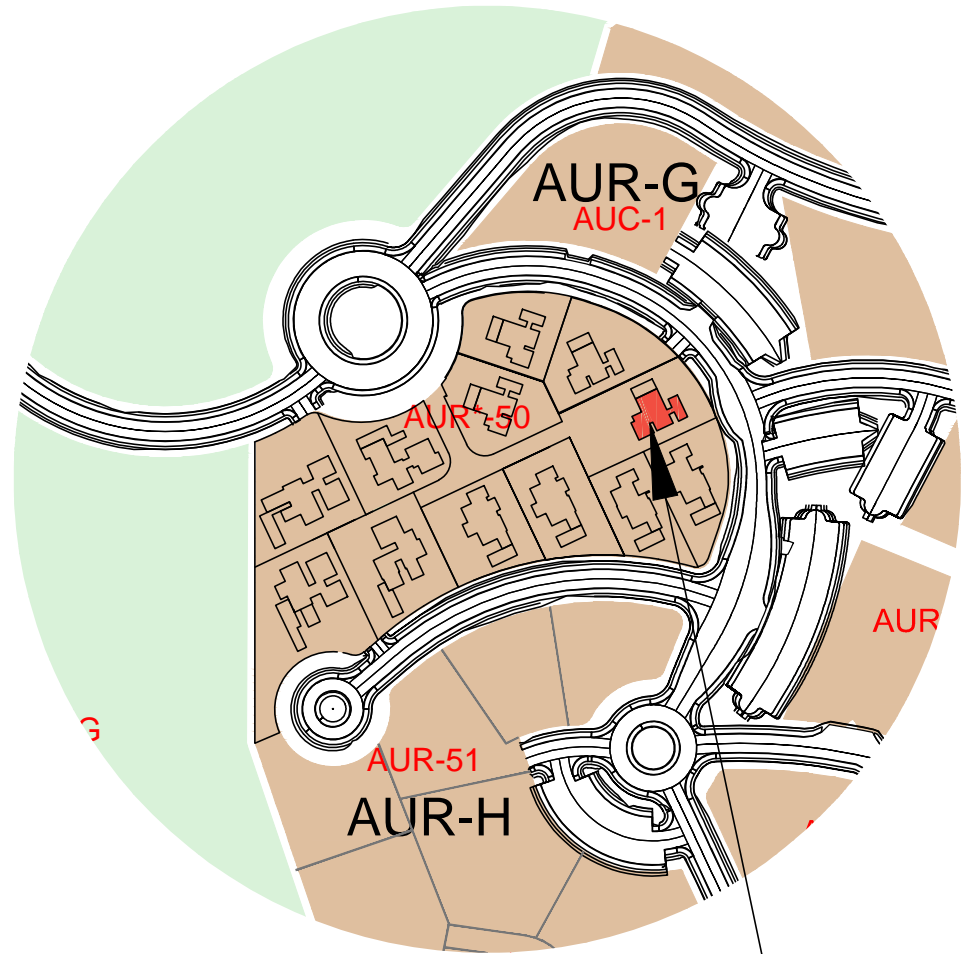
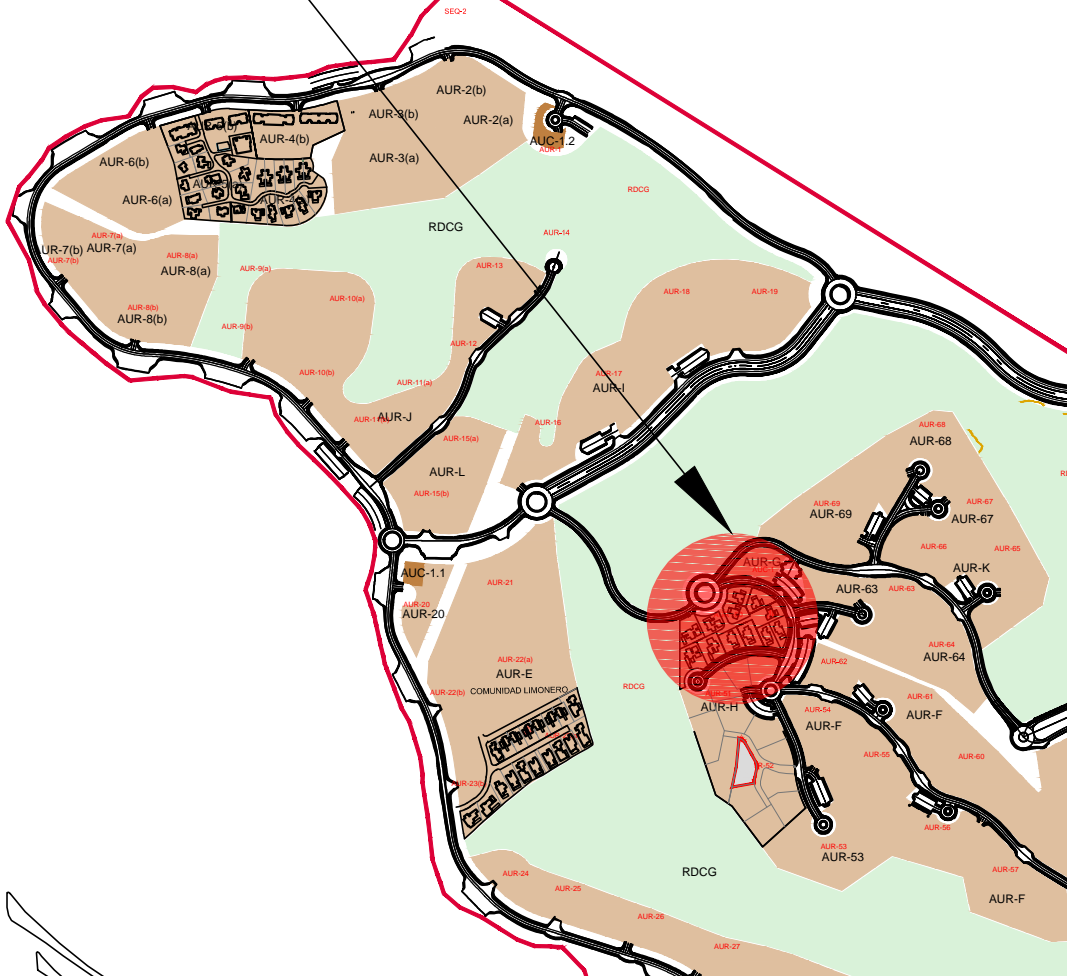
VILLA CUCO 8

PLANTA ALTA

1/100

# LAS COLINAS , ORIHUELA

## COMUNIDAD ALMENDRO



## VIVIENDA 9

**GRUPOMARJAL**

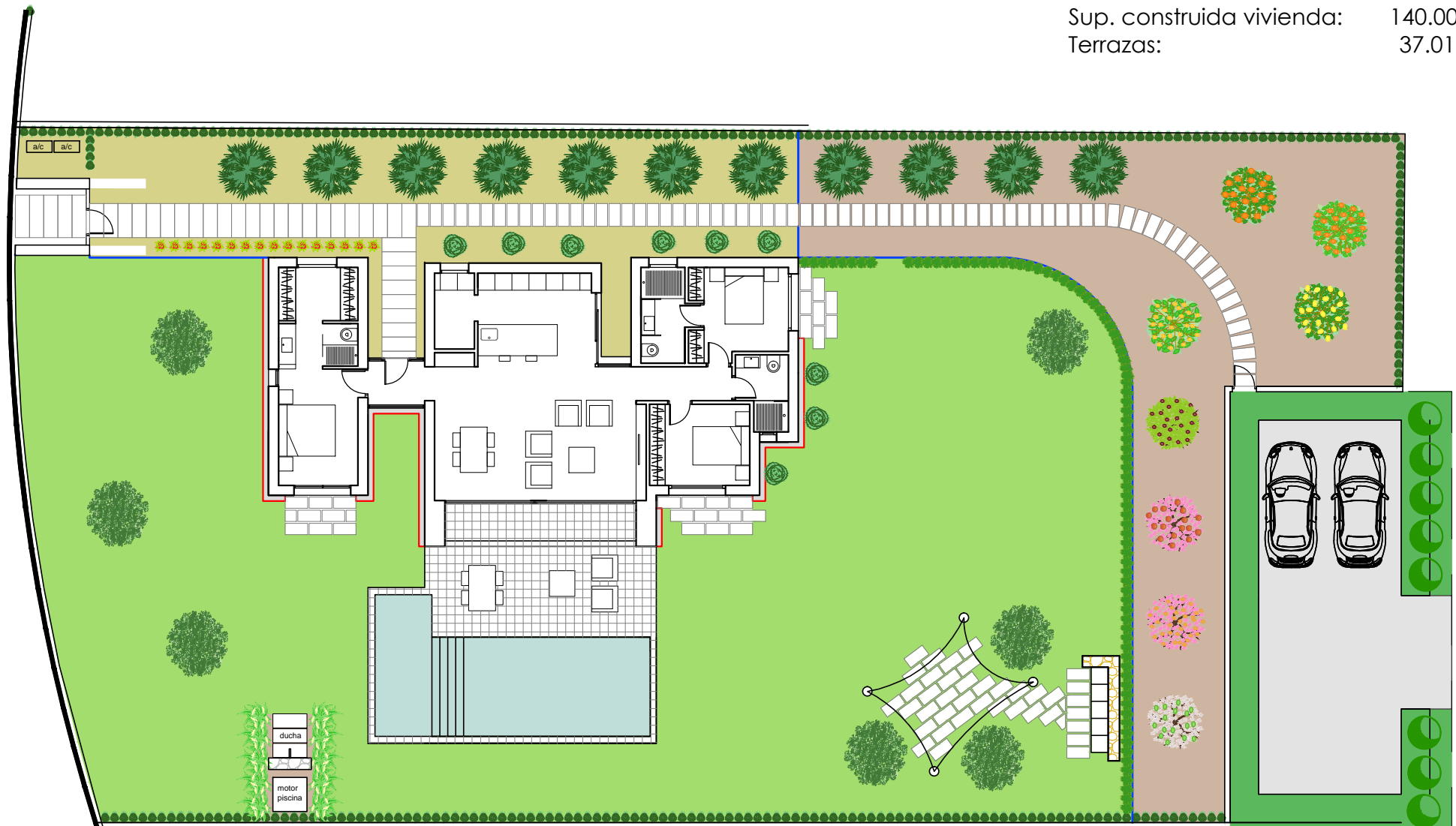
**COMUNIDAD ALMENDRO**

**ALMENDRO 9**

**PLANTA DE SITUACIÓN**

**SIN ESCALA**

Sup. construida vivienda: 140.00 m<sup>2</sup>  
Terrazas: 37.01 m<sup>2</sup>



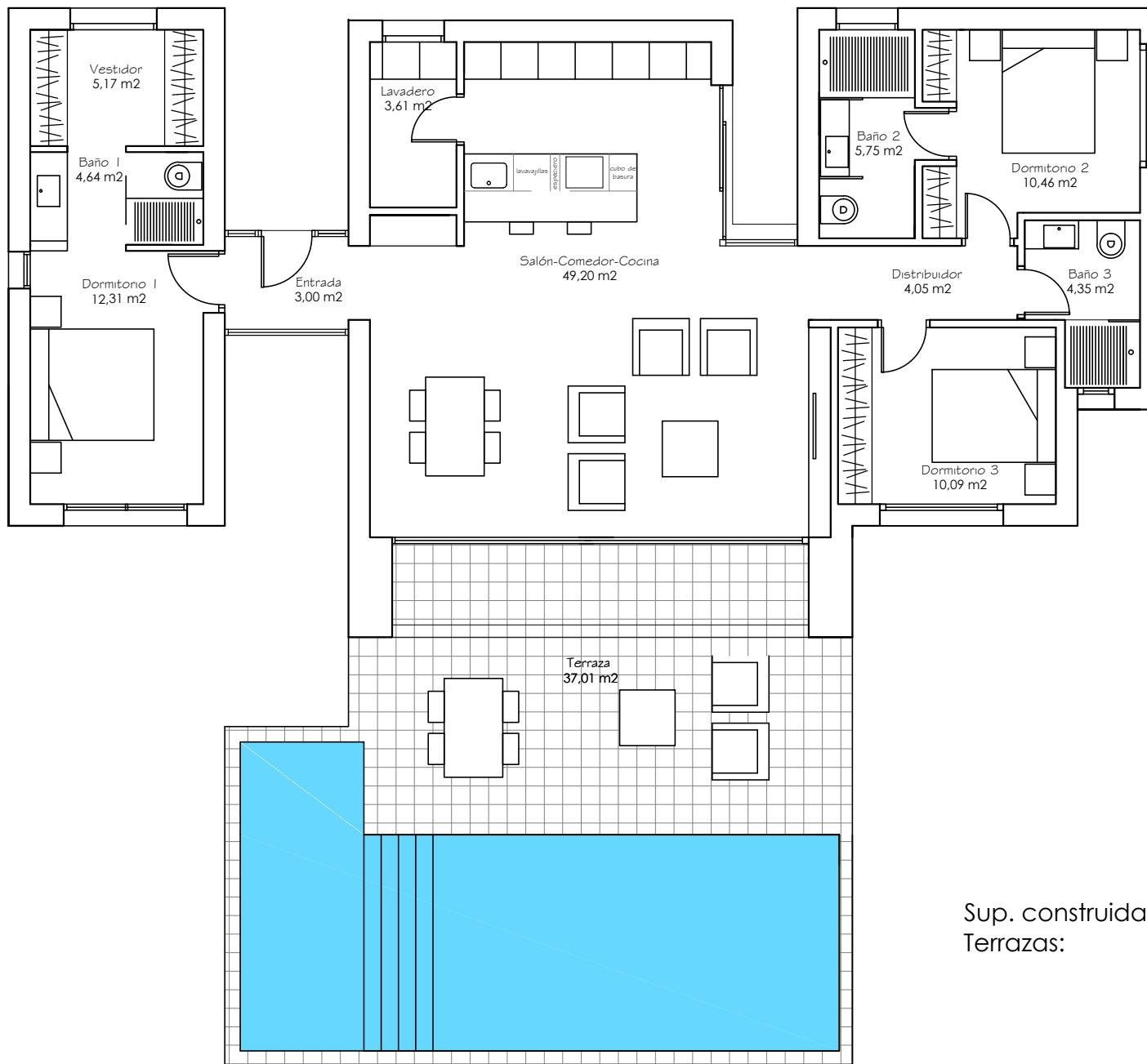
**GRUPOMARJAL**

**COMUNIDAD ALMENDRO**

**ALMENDRO 9**

**PLANTA PARCELA**

**1/200**



Sup. construida vivienda: 140.00 m<sup>2</sup>  
 Terrazas: 37.01 m<sup>2</sup>

**GRUPOMARJAL**

**COMUNIDAD ALMENDRO**

**ALMENDRO 9**

**PLANTA MOBILIARIO**

**1/100**



# RESIDENCIAL “LAS COLINAS”

