



Zen Sakura Villas



Santa Rosalía
lake and life resort

The concept: sustainability, quality and design

The Sakura Zen villas have been designed with sustainable construction standards to obtain high energy efficiency, which is why the Sakura Zen villas have obtained the Energy Efficiency Certificate A.

Porcelanosa has been chosen to provide the villas with top-quality interior finishes.

An avant-garde and functional design that allows you to fully enjoy the interior and exterior spaces.



The dual orientation of the Zen Sakura villa together with its functional design, allows the indoor and outdoor spaces to merge seamlessly, connecting them through large sliding windows, as a single space to make the most of it.

The garden is delivered completely finished, with plants and artificial grass, to reduce maintenance costs and water consumption.

Bottega Caliza Anti-slip exterior paving.

Front view

The façades have been designed to achieve an attractive and contemporary image by combining materials such as single-layer mortar with wood imitation porcelain tiles from Porcelanosa's Forest Cognac series. The decorative finishes combine thermal performance with the most avant-garde design, adapting to the needs of the 21st century.

All the perimeter walls are made of solid brick for greater resistance. They have an air chamber with thermal and acoustic insulation, which achieves significant energy savings and helps to maintain a pleasant temperature inside the home.

Zen Sakura Villas



Rear view



Rear view

The interior partitions are made with plasterboard, to guarantee a perfectly smooth finish. All the partition walls are made with double panels on both sides, which makes them highly resistant.

In addition to a perfect finish, we avoid making cracks in the walls to conduct the installations, which debilitates them and generates acoustic bridges.

The installations are conducted inside the partition walls, which also have acoustic insulation inside them to provide greater soundproofing between rooms.

Inside you will enjoy the best Porcelanosa qualities in flooring, tiling, kitchens and sanitary ware. As well as in Porcelanosa's Noken taps and faucets, which with their cold opening system and their aerators, save up to 55% of water compared to other taps.

The villas have pre-installation for electric vehicle chargers.



Front view

Spacious bedrooms with en-suite bathrooms.

The master bedroom with a dressing room and bathroom, also has two large terraces on both sides, with an intimate and private terrace for your enjoyment plus the main large south-facing terrace, which can be accessed without entering the master bedroom.

All bedrooms have automated thermo-acoustic aluminum shutters. Contributing to the soundproofing and energy efficiency of the villas.



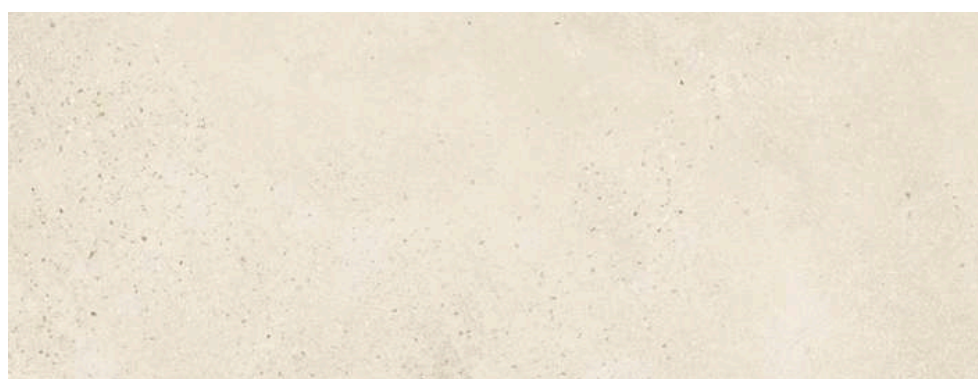
Choose between different types finishes according to your taste.

Warm tones

Urban Natural Nature



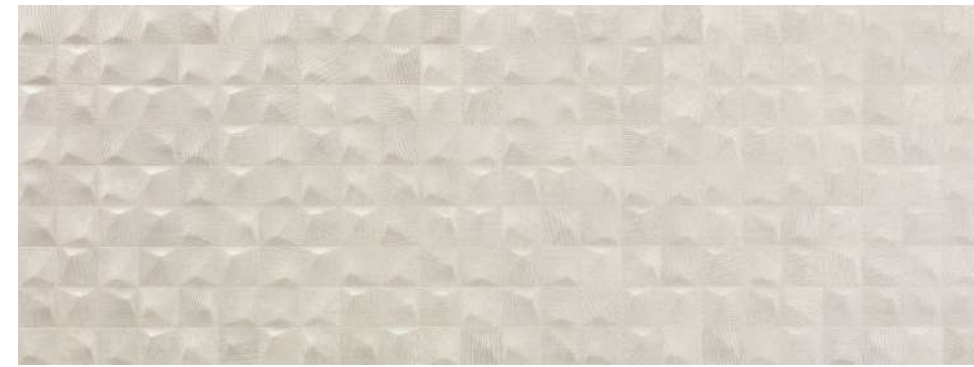
Vela Natural



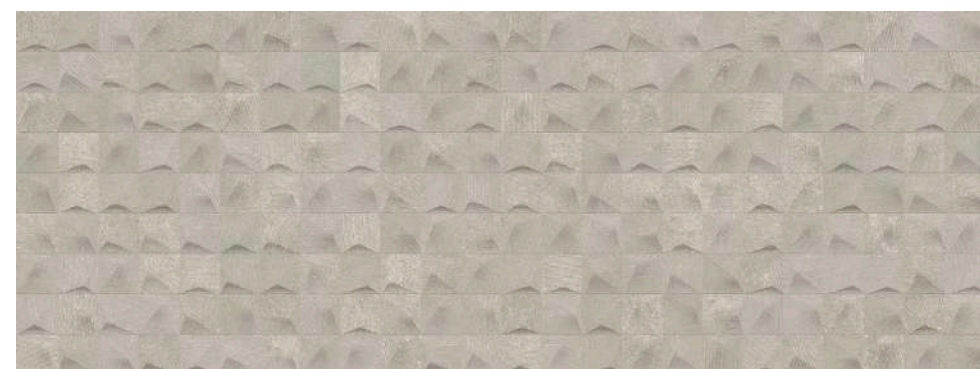
Choose between different types finishes according to your taste.

Neutral tones

Urban Caliza Nature



Urban Acero Nature





Porcelanosa kitchens are fully equipped with high-end Neff appliances. Built-in ceiling extractor hood and LED lighting integrated into the kitchen.

Choice of colors



Nubol white



Etimoe Land

Kitchen worktop, island and front finished in KRION Eco-Active®, an innovative material that purifies the air, is antibacterial and allows easy cleaning. It is also repairable in the event of an accident.

Double height in the dining area

Floor-to-ceiling doors throughout the house, with magnetic latches, hidden hinges and rubber seal.



The interior flooring is continuous throughout the house, which achieves a very attractive aesthetic and clean effect. The interior floor is finished with a white skirting board to match the interior carpentry and create a completely integrated atmosphere throughout the house.

The ceiling is also continuous throughout the villa, creating greater spaciousness and harmony.

In addition to natural light that filters through the large sliding windows, the layout of the living room provides extra light, achieving a feeling of greater spaciousness, reinforced by the double-height dining area which also allows light to enter from the first floor.



Zen Sakura Villas



Lake and Beachclub

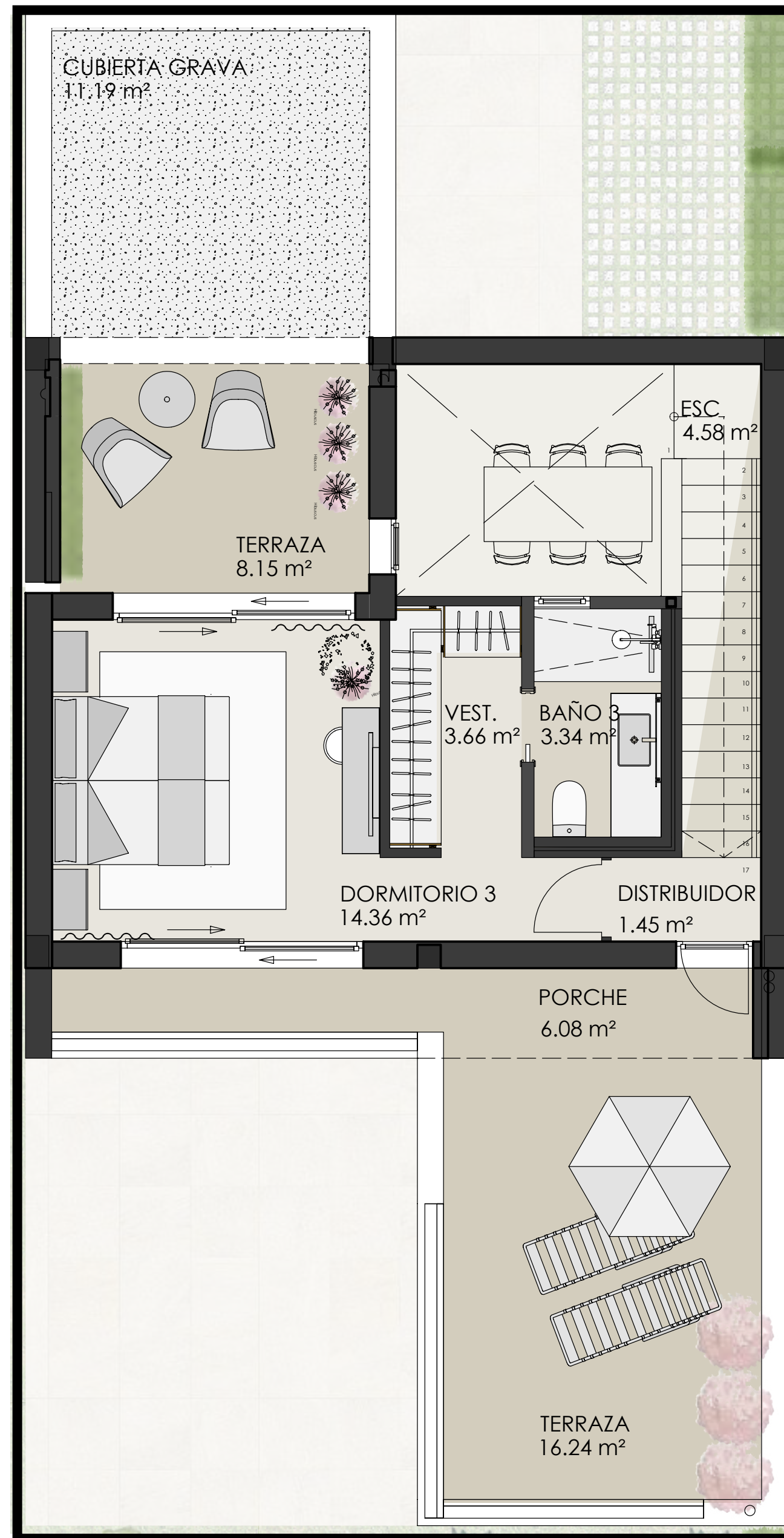
The Zen Sakura villa makes the most of its 122m² built size to generate a greater feeling of spaciousness.

The plots of the villas range from 210m² to 356 m².

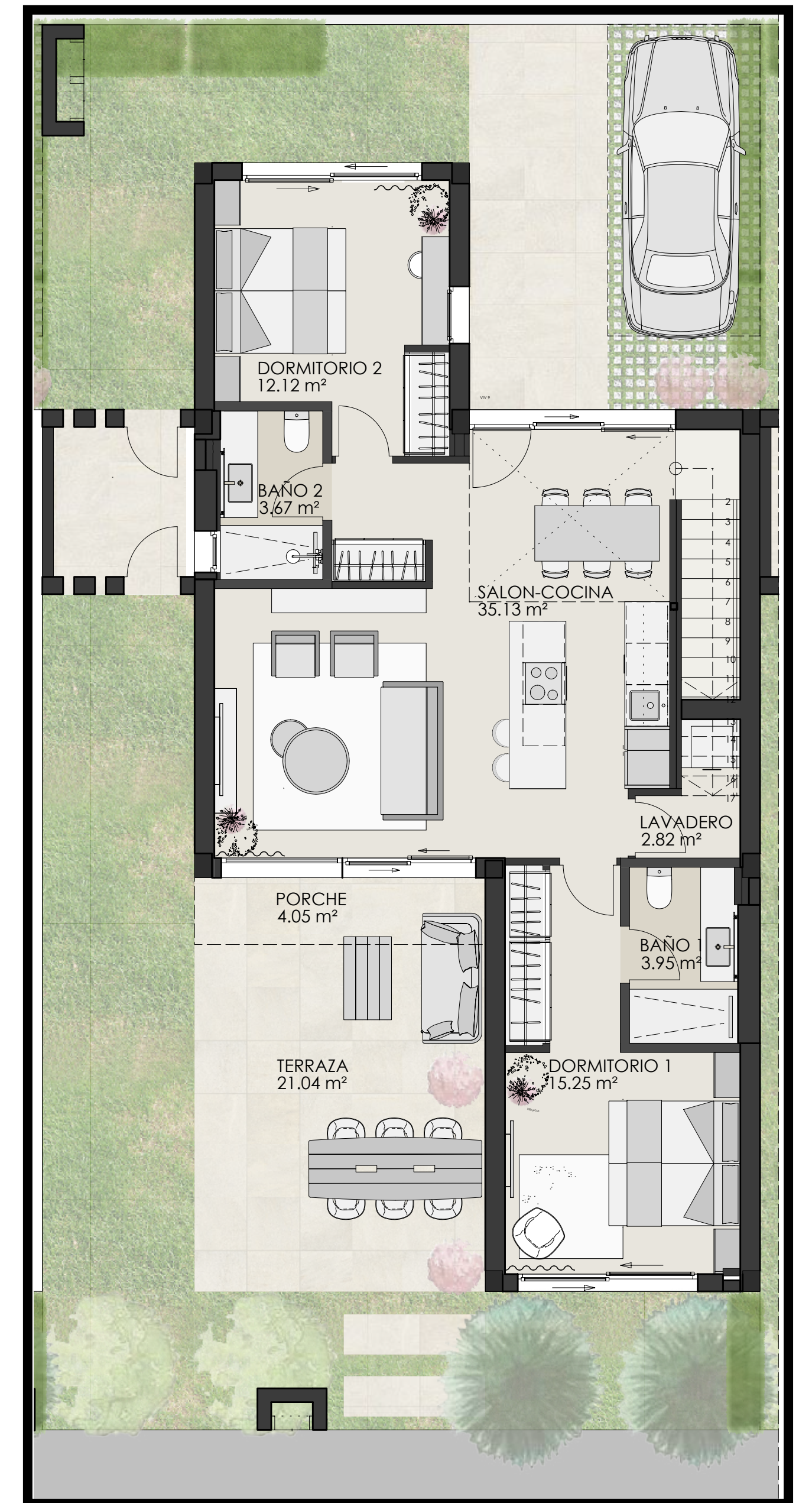
Exterior paving Botega Caliza anti-slip.



Ground floor



Top floor



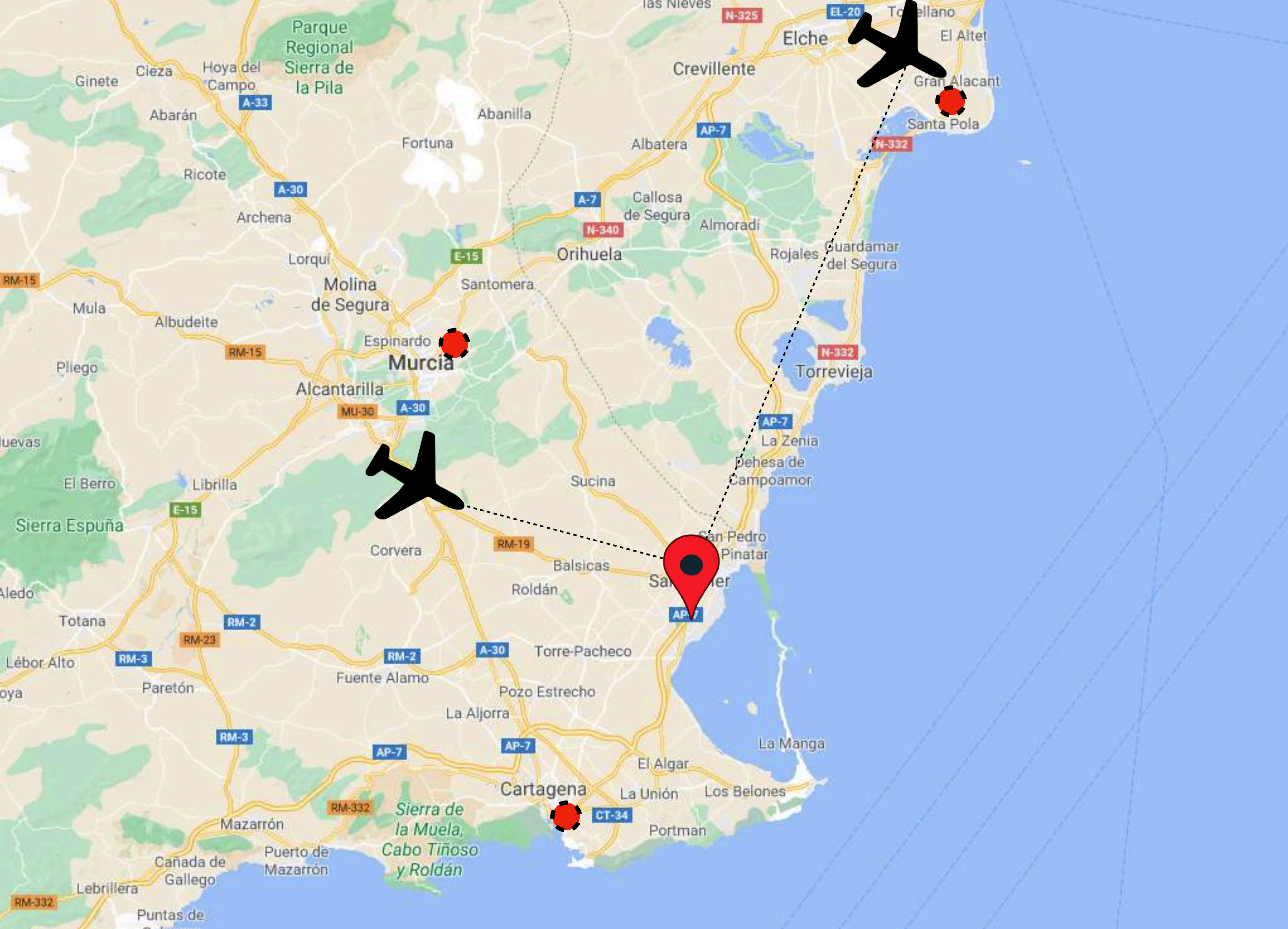
Plot



Private access

Access for vehicle entry and exit through private the private road is exclusively for residents, accessed through an automatic gate, with an anti-crushing security device and remote control. There will also be pedestrian access.

53.



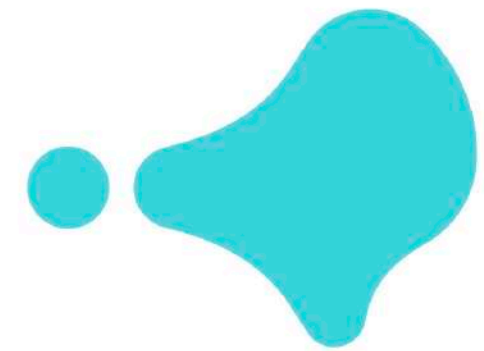
 **Zen Sakura Villas**

The Zen Sakura villas are located within the private urbanization "Santa Rosalia Lake & Life Resort". The resort is located in a strategic point, with easy access to the AP-7, 2 international airports, golf courses, natural landscapes, beaches, shopping centres and 3 large cities.

Distances:

- Alicante Airport 81km (1 hour)
- Murcia Airport 31km (25 mins)
- Cartagena 22km (16mins)
- Murcia 48km (35 mins)
- Alicante 88km (1h,15mins)

Zen Sakura Villas



Santa Rosalía
lake and life resort



Non-contractual and merely illustrative images subject to technical, legal or commercial modifications by the project management or competent authority. The infographics of the façades, common elements and other spaces are indicative and may be subject to verification or modification in the technical projects. The furniture of the interior infographics is not included and the equipment of the villas will be that indicated in the corresponding building specifications. All information and documentation will be provided in accordance with the provisions of Real Decreto 515/1989 and other regulations that may complement it, whether of a state or regional nature.

Zen Sakura villas

Parcela P-52
PP.Sta.Rosalía,
30710 Torre-Pacheco, Murcia

Sales office

Calle 1
PP.Sta.Rosalía,
30710 Torre-Pacheco, Murcia

T. +34 645 410 082

info@evoheresorts.com